

Kadaltilla

Adelaide Park Lands Authority



BOARD MEETING AGENDA

Thursday, 25 July 2024 at 4.30 pm
Colonel Light Room, Adelaide Town Hall

Kadaltilla / Adelaide Park Lands Authority

Board Meeting Agenda, Thursday, 25 July 2024 at 4.30 pm
Colonel Light Room, Adelaide Town Hall

Membership	The Lord Mayor 4 other members appointed by the Council 5 members appointed by the Minister for Planning
Quorum	6
Presiding Member	The Right Honourable the Lord Mayor, Dr Jane Lomax-Smith
Deputy Presiding Member	Elinor Walker
Board Members	Allison Bretones Ashley Halliday Justyna Jochym Stephanie Johnston Mitzi Nam Deputy Lord Mayor, Councillor Keiran Snape Craig Wilkins Ben Willsmore
Proxy Board Members	Professor Emeritus Damien Mugavin (for Stephanie Johnston) Councillor Henry Davis (for Deputy Lord Mayor, Councillor Keiran Snape) Dennis Rigney (for Mitzi Nam)

Agenda

Purpose

1. Welcome and Opening

1.1 Acknowledgement of Country

At the opening of the Board Meeting, the Board member presiding will state:

‘Kadaltilla / Adelaide Park Lands Authority acknowledges that we are meeting on traditional Country of the Kurna people of the Adelaide Plains and pays respect to Elders past and present. We recognise and respect their cultural heritage, beliefs and relationship with the land. We acknowledge that they are of continuing importance to the Kurna people living today.

And we also extend that respect to other Aboriginal Language Groups and other First Nations who are present today.’

1.2 Apologies

Board Members - Justyna Jochym
Stephanie Johnston

1.3 Confirmation of Minutes

4 - 10

That the Minutes of the meeting of the Board of Kadaltilla / Adelaide Park Lands Authority held on 27 June 2024 be taken as read and be confirmed as an accurate record of proceedings.

2. Conflict of Interest

3. Presiding Member Report (verbal)

4. Public Hearing - Draft Adelaide Park Lands Management Strategy - Towards 2036

4.30pm to 5.30pm

In accordance with Section 18(4)(c) of the *Adelaide Park Lands Act 2005* (SA), Kadaltilla invites any interested person to attend and speak at a public meeting held in relation to the draft *Adelaide Park Lands Management Strategy – Towards 2036*. [Link 1](#) .

5. Deputation

6. Items for Board Decision

6.1	Glen Osmond Road, Hutt Road and Park 17 Improvements	For decision	11 - 23
6.2	Park Lands Leasing – Expressions of Interest: Carriageway Park / Tuthangga (Park 17) and Blue Gum Park / Kurangga (Park 20)	For decision	24 - 121
6.3	Kadaltilla 2024 Annual Community Forum	For decision	122 - 125

7. Items for Noting

7.1	Update on the World Heritage Listing for the Adelaide Park Lands and Rural Settlement Landscapes	For decision	126 - 128
------------	--	--------------	-----------

8. Other Business

8.1	Disc Golf Course
------------	------------------

9. Meeting Close

Kadaltilla

Adelaide Park Lands Authority



BOARD MEETING MINUTES

Thursday, 27 June 2024

Colonel Light Room, Adelaide Town Hall

Kadaltilla / Adelaide Park Lands Authority

Board Meeting Minutes, Thursday, 27 June 2024, at 4.32 pm
Colonel Light Room, Adelaide Town Hall

Present:

Presiding Member	The Right Honourable the Lord Mayor, Dr Jane Lomax-Smith
Deputy Presiding Member	Elinor Walker
Board Members	Allison Bretones
	Ashley Halliday
	Justyna Jochym
	Stephanie Johnston
	Mitzi Nam
	Deputy Lord Mayor, Councillor Keiran Snape
	Craig Wilkins
	Ben Willsmore

1 Welcome and Opening

1.1 Acknowledgement of Country

At the opening of the Board Meeting, the Board member presiding will state:

'Kadaltilla / Adelaide Park Lands Authority acknowledges that we are meeting on traditional Country of the Kurna people of the Adelaide Plains and pays respect to Elders past and present. We recognise and respect their cultural heritage, beliefs and relationship with the land. We acknowledge that they are of continuing importance to the Kurna people living today.

And we also extend that respect to other Aboriginal Language Groups and other First Nations who are present today.'

1.2 Apologies

Nil

1.3 Confirmation of Minutes

Moved by Deputy Lord Mayor, Councillor Keiran Snape,
Seconded by Justyna Jochym -

That the Minutes of the meeting of the Board of Kadaltilla / Adelaide Park Lands Authority held on 23 May 2024 and Special meeting held on 6 June 2024 be taken as read and be confirmed as an accurate record of proceedings.

Carried

2 Conflict of Interest

Justyna Jochym declared a material conflict of interest in parts 3-5 of Item 5.3 Multi-Year Major Event Licences pursuant to section 75 of the *Local Government Act 1999* (SA) as she is the Chief Executive of Festival City Adelaide, the industry body for South Australian Arts and Culture Festivals and that she would vacate the room at the time of consideration.

The Presiding Member, the Lord Mayor declared a material conflict of interest in part 3.3 of the Item 5.3 Multi-Year Major Event Licences pursuant to section 75 of the *Local Government Act 1999* (SA) as she is a member of the Pioneer Women's Memorial Garden Trust and that she would vacate the room at the time of consideration.

3 Presiding Member Report (verbal)

The Presiding Member provided a verbal report.

4 Deputations

Nil

5 Items for Board Discussion and Decision

5.1 Draft City Plan – Adelaide 2036 for public consultation

Board Decision

Moved by Ben Willsmore,
Seconded by Craig Wilkins -

That the Kadaltilla / Adelaide Park Lands Authority:

1. Notes the update on the consultation draft of the City Plan – Adelaide 2036 as contained in Attachment A to Item 5.1 on the Agenda for the Kadaltilla / Adelaide Park Lands Authority meeting on 27 June 2024.
2. Notes the Executive Officer of the Kadaltilla / Adelaide Park Lands Authority will coordinate a submission to the City Plan consultation out of session.

Carried

5.2 Victoria Park Master Plan Endorsement

Board Decision to Advise City of Adelaide

Moved by Ashley Halliday,
Seconded by Ben Willsmore -

THAT THE KADALTILLA / ADELAIDE PARK LANDS AUTHORITY ADVISES COUNCIL:

That the Kadaltilla / Adelaide Park Lands Authority:

1. Endorses the Victoria Park / Pakapakanthi (Park 16) Master Plan as contained in Attachment A – Victoria Park / Pakapakanthi (Park 16) Master Plan to Item 5.2 on the Agenda for the meeting of Kadaltilla / Adelaide Park Lands Authority held on 23 May 2024.

Carried

5.3 Park Lands Leasing - Expression of Interest King Rodney Park / Itayami-itpina (Park15)

Board Decision to Advise City of Adelaide

Moved by Deputy Lord Mayor, Councillor Keiran Snape,
Seconded by Ben Willsmore -

THAT THE KADALTILLA / ADELAIDE PARK LANDS AUTHORITY ADVISES COUNCIL:

That the Kadaltilla / Adelaide Park Lands Authority:

1. Endorses the Council through the Acting Chief Executive Officer to enter into lease negotiations with Prince Alfred College (PAC) for a five-year Park Lands Community Lease Agreement for a sports building and playing field in King Rodney Park / Ityamai-itpina (Park 15), subject to:
 - 1.1. PAC entering into five-year sub-letting agreements with the Goodwood Saints Football Club (GSFC) and Goodwood Cricket Club (GCC).
 - 1.2. Priority use of the facilities in Park 15 granted to GSFC and GCC for the days and times detailed in this report.
 - 1.3. Sub-letting fees not exceeding the fees detailed in this report.
 - 1.4. PAC entering into other complementary sub-letting and casual hire arrangements consistent with the Adelaide Park Lands Leasing and Licensing Policy.

Carried

5.4 Multi-Year Major Event Licences

Justyna Jochym declared a material conflict of interest in parts 3-5 of Item 5.3 Multi-Year Major Event Licences pursuant to section 75 of the *Local Government Act 1999* (SA) as she is the Chief Executive of Festival City Adelaide, the industry body for South Australian Arts and Culture Festivals and that she would vacate the room at the time of consideration.

The Presiding Member, the Lord Mayor declared a declared a material conflict of interest in part 3.3 of Item 5.3 Multi-Year Major Event Licences pursuant to section 75 of the *Local Government Act 1999* (SA) as she is a member of the Pioneer Women's Memorial Garden Trust and would vacate the room at the time of consideration.

The Presiding Member then sought leave of the meeting to take the motion in parts to allow board members who have declared a conflict of interest to participate in and vote on parts where there is no conflict of interest. Leave was granted.

Board Decision to Advise City of Adelaide

THAT THE KADALTILLA / ADELAIDE PARK LANDS AUTHORITY ADVISES COUNCIL:

That the Kadaltilla / Adelaide Park Lands Authority:

Moved by Deputy Lord Mayor, Councillor Keiran Snape,
Seconded by Allison Bretones -

1. Notes the proposed reintroduction of multi-year licenses for major events in the Park Lands.
2. Notes the supporting information as presented in Attachment A to Item 5.3 on the Agenda for the meeting of the Kadaltilla/Adelaide Park Lands Authority meeting held on 27 June 2024.

Carried

Justyna Jochym then withdrew her chair and left the Colonel Light Room at 5:20pm due to her declared conflict of interest.

It was then,

Moved by Elinor Walker,
Seconded by Deputy Lord Mayor, Councillor Keiran Snape -

3. Endorses five-year licence agreements with the following applicants:
 - 3.1 Adelaide Festival Centre Trust for the use of Pinky Flat / Tarntanya Wama (Park 26) and Barr Smith Walk / Tarntanya Wama (Park 26) for the Oz Asia Festival's Moon Lantern Trail from 2024 to 2028.
 - 3.2 Adelaide Festival Corporation for the use of Elder Park / Tarntanya Wama (Park 26), Pinky Flat / Tarntanya Wama (Park 26) and Barr Smith Walk / Tarntanya Wama (Park 26) for the Adelaide Festival from 2025 to 2029.
 - 3.4 Adelaide Fringe for the use of Rymill Park / Murlawirrapurka (Park 14) for the Adelaide Fringe Box Office from 2025 to 2029
 - 3.5 Adelaide Horse Trials Management Inc for the use of Victoria Park / Pakapakanthi (Park 16), King Rodney Park / Ityamai-itpina (Park 15), Rymill Park / Murlawirrapurka (Park 14) for the Adelaide Equestrian Festival from 2025 to 2029.
 - 3.6 African Communities Council of SA Inc (Migrant Resource Centre) for the use of Victoria Square / Tarntanyangga for the Unmasked African Festival South Australia from 2024 to 2028.

Carried

The Presiding Member, the Lord Mayor withdrew her chair and left the Colonel Light Room at 5:21pm due to her declared conflict of interest.

Elinor Walker, Deputy Presiding Member then took the Chair at 5:21pm.

It was then –

Moved by Deputy Lord Mayor, Councillor Keiran Snape,
Seconded by Stephanie Johnston-

- 3.3 Adelaide Festival Corporation for the use of the Pioneer Women's Memorial Garden and Lady Esther Lipman Garden for Adelaide Writer's Week from 2025 to 2029.

Carried

The Lord Mayor re-entered the Colonel Light Room and took the Chair at 5:22pm.

It was then –

Moved by Deputy Lord Mayor, Councillor Keiran Snape,
Seconded by Elinor Walker -

- 3.7 Australia Day Council of South Australia for the use of Elder Park / Tarntanya Wama (Park 26) for Aus Lights on the River – Australia Day from 2025 to 2029.
- 3.8 City to Bay Fun Run Committee Incorporated for the use Hindmarsh Square / Mukata for the City to Bay Expo from 2024 to 2028.
- 3.9 Field Trip Pty Ltd for the use of Bonython Park / Tulya Wardli (Park 27) for Field Trip Festival events from 2024 to 2028.
- 3.10 Gluttony Food and Wine Festival Pty Ltd for the use of Rymill Park / Murlawirrapurka (Park 14) for Gluttony from 2025 to 2029.
- 3.11 Motorcycle Riders' Association of South Australia Inc. for the use of Victoria Park / Pakapakanthi (Park 16) for Toy Run from 2024 to 2028.
- 3.12 SidebySide Events Pty Ltd for the use of Helen Mayo Park / Tulya Wardli (Park 27) for Sanctuary and SidebySide from 2025 to 2029.
- 3.13 St John Ambulance SA for the use of Elder Park / Tarntanya Wama (Park 26) for Carols by Candlelight from 2024 to 2028.
- 3.14 The Gardeners of Uneathly Delights for the use of Rundle Park / Kadlitpina (Park 13) for the Garden of Uneathly Delights from 2025 to 2029.
- 3.15 Wildlands Music Festival Pty Ltd for the use of Ellis Park / Tampawardli (Park 24) for Wildlands from 2025 to 2029.
- 3.16 WOMADelaide Foundation for the use of Frome Park / Nellie Raminyemmerin (Park 11) for WOMADelaide from 2025 to 2029.

Carried

It was then –

Moved by Deputy Lord Mayor, Councillor Keiran Snape,
Seconded by Stephanie Johnston -

4. Endorses a four-year licence agreement with the following applicant:
 - 4.1 Feast Festival for the use of Rundle Park / Kadlitpina (Park 13) for the Picnic in the Park from 2025 to 2028.
5. Endorses three-year licence agreements with the following applicants:
 - 5.1. Cheesefest Australia Pty Ltd for the use of Rundle Park / Kadlitpina (Park 13) for Cheesefest from 2024 to 2026.
 - 5.2. Fuzzy Operations Pty Ltd for the use of Ellis Park / Tampawardli (Park 24) for Listen In from 2024 to 2026.
 - 5.3. Illuminate Adelaide Foundation Ltd for the use of Light Square / Wauwi, Red Gum Park & Prince Henry Gardens / Karrawirra (Park 12), Rymill Park / Murlawirrapurka (Park 14) and Rundle Park / Kadlitpina (Park 13) for Illuminate Adelaide from 2025 to 2027.
 - 5.4. Massive Events Corporation Pty Ltd for the use of Victoria Park /Pakapakanthi (Park 16) and King Rodney Park / Ityamai-itpina (Park 15) for the Adelaide Motorsport Festival from 2025 to 2027.
 - 5.5. Nokturnal Events Pty Ltd for the use of Pinky Flat / Tarntanya Wama (Park 26) for Oktoberfest in the Gardens from 2025 to 2027.
 - 5.6. Vegan Festival for the use of Rundle Park / Kadlitpina (Park 13) for Vegan Festival Adelaide from 2024 to 2026.
 - 5.7. Wonderland Presents Pty Ltd for the use of Hindmarsh Square / Mukata for Wonderland Spiegeltent Festival Hub and Adelaide Blues Music Festival from 2025 to 2027.

Carried

Justyna Jochym re-entered the Colonel Light Room at 5:23pm.

5.5 Draft Light Square/Wauwi Master Plan for Public Consultation

Board Decision to Advise City of Adelaide

Moved by Craig Wilkins,
Seconded by Ben Willsmore -

THAT KADALTILLA / ADELAIDE PARK LANDS AUTHORITY ADVISES COUNCIL

That the Kadaltilla / Adelaide Park Lands Authority:

1. Receives the outcomes of the targeted stakeholder consultation contained in **Attachment A** to Item 5.5 on the Agenda for the meeting of the Kadaltilla / Adelaide Park Lands Authority held on 27 June 2024.
2. Endorses the draft Light Square/Wauwi Master Plan contained in **Attachment B** to Item 5.5 on the Agenda for the meeting of the Kadaltilla / Adelaide Park Lands Authority held on 27 June 2024, for the purposes of community consultation.
3. Approves the draft Light Square/Wauwi Engagement Plan contained in **Attachment C** to Item 5.5 on the Agenda for the meeting of the Kadaltilla / Adelaide Park Lands Authority held on 27 June 2024, for the purposes of community consultation.

Carried

5.6 Adelaide Park Lands Biodiversity Survey

Board Decision to Advise City of Adelaide

Moved by Elinor Walker,
Seconded by Craig Wilkins -

THAT THE KADALTILLA / ADELAIDE PARK LANDS AUTHORITY RECOMMENDS TO COUNCIL

That the Kadaltilla / Adelaide Park Lands Authority:

1. Receives the Adelaide Park Lands Biodiversity Survey Report contained in **Attachment A** to Item 5.6 on the Agenda for the meeting of the Kadaltilla / Adelaide Park Lands Authority held on 27 June 2024.
2. Notes a digital reporting framework for publicly communicating the findings of the biodiversity survey is in development and will be presented to Kadaltilla / Adelaide Park Lands by September 2024.

Carried

6 Items for Noting

6.1 Update on the World Heritage Tentative Listing for the Adelaide Park Lands and Rural Settlement Landscapes

Board Decision

Moved by Stephanie Johnston,
Seconded by Allison Bretones -

That the Kadaltilla / Adelaide Park Lands Authority:

1. Receives and notes the report contained in Item 6.1 on the Agenda for the meeting of the Board of Kadaltilla / Adelaide Park Lands Authority held on 27 June 2024.

Carried

7 Other Business

- Board Members congratulated the City of Adelaide regarding The Place of Reflection and Quentin Kenihan Inclusive Playspace projects, which both won awards or were acknowledged at the Australian Institute of Landscape Architecture Awards.
- Discussion ensued surrounding examples where local government has reclaimed roads to Park Lands or green spaces.
- Discussion ensued surrounding the City of Adelaide's submission on the draft Urban Greening Strategy.

Closure

The meeting closed at 6.06 pm

The Lord Mayor, Dr Jane Lomax-Smith
Presiding Member
Kadaltilla / Adelaide Park Lands Authority

Documents Attached:

Nil

Kadaltilla

Adelaide Park Lands Authority

Glen Osmond Road, Hutt Road and Park 17 Improvements

Thursday, 25 July 2024
Board Meeting

Author:
Mark Goudge, Associate
Director Infrastructure

Public

Purpose

This report presents the proposal for the rehabilitation of the existing open channel along Glen Osmond Road as part of the Glen Osmond Road, Hutt Road and Carriageway Park / Tuthangga (Park 17) Improvements project. The project will address the existing concerns associated with the eroded open channel by conveying the stormwater flow through an underground culvert whilst conserving the existing mature trees, enhancing Park Lands safety and accessibility, and appropriately managing stormwater.

As part of the project, other improvement works such as renewing the ageing road surface, lighting infrastructure, and construction of new shared-use path to strengthen the connection between the southern Park Lands and the City will also be undertaken.

Recommendation

THAT THE KADALTILLA / ADELAIDE PARK LANDS AUTHORITY ADVISES COUNCIL:

That the Kadaltilla / Adelaide Park Lands Authority:

1. Endorses the recommendation to proceed with the Glen Osmond Road, Hutt Road and Carriageway Park / Tuthangga (Park 17) Improvements concept as contained in **Attachment A** to Item 6.1 on the Agenda for the meeting of Kadaltilla / Adelaide Park Lands Authority held on 25 July 2024.
 2. Notes that the Administration will provide further updates to Kadaltilla as design progresses.
-

Implications

<p>Adelaide Park Lands Management Strategy 2015-2025</p>	<p>Adelaide Park Lands Management Strategy 2015-2025 Strategy 2.2 Establish shared walking and cycling paths with safe connections and crossing points linking the City and inner suburbs. Strategy 3.1 Develop an identifiable landscape character for each Park Lands edge.</p>
<p>2023-2028 Strategic Plan</p>	<p>Kadaltilla / Adelaide Park Lands Authority 2023-2028 Strategic Plan Strategic Plan Alignment – Environmental Performance Define, protect, and enhance landscape values and design qualities</p>
<p>Policy</p>	<p>Not as a result of this report.</p>
<p>Consultation</p>	<p>The community will be engaged through a project website following the endorsement of this project in the 2024/25 Business Plan and Budget.</p>
<p>Resource</p>	<p>Not as a result of this report.</p>
<p>Risk / Legal / Legislative</p>	<p>Not as a result of this report.</p>
<p>Opportunities</p>	<p>Not as a result of this report.</p>
<p>City of Adelaide Budget Allocation</p>	<p>Council has allocated \$42,000 for detailed design as part of its 2024/25 Business Plan and Budget process.</p>
<p>Life of Project, Service, Initiative or (Expectancy of) Asset</p>	<p>50 to 100 years asset life expectancy, depending on asset type.</p>
<p>Ongoing Costs (eg maintenance cost)</p>	<p>No additional ongoing costs expected for renewal of existing assets. The shared-use path and associated Park Lands lights will be new assets which will require ongoing maintenance costs (i.e. 2% of capital cost).</p>
<p>Other Funding Sources</p>	<p>No other external funded sources identified.</p>

Discussion

Background

1. The project was initiated as a stormwater renewal project with an objective to rehabilitate the existing open channel along Glen Osmond Road. The open channel performs an important role for stormwater management in the area and requires renewal due to the deteriorated condition of the asset.
2. The existing unfenced open channel with steep banks poses an ongoing risk to public safety, which is exacerbated by the progressive erosion affecting the performance of the stormwater asset and undermining the stability of the banks. The bank erosion will also impose irreversible damages to the row of mature sugar gums (*Eucalyptus cladocalyx*), which forms a towering avenue approach to the City. There are a total of 45 trees, including 19 significant trees and 12 regulated trees lining the south-western bank of the channel between Greenhill Road and South Park Lands Creek.
3. This project was created to address the erosion issue of the open channel to provide long-term tree health preservation of the existing gum trees, while maintaining the stormwater management function. Importantly, the project will improve access and pedestrian safety concerns created by the steep banks of the open channel.
4. A comprehensive feasibility study was completed to consider numerous options to rehabilitate the existing open channel that meets the project objectives to provide an appropriate stormwater management solution, preserve the existing significant trees, and remove the current safety hazard due to the eroding steep banks.
5. The options investigated included but were not limited to, like-for-like renewal of the open channel; backfilling the existing open channel and conveying stormwater via a culvert beneath the road; and diverting some of the stormwater flow through two vegetated ephemeral basins to provide environmental, biodiversity and passive recreational benefits. These options either didn't fully meet the project objectives, required the removal of numerous existing trees, are technically infeasible, or have significant budget implication.
6. The most feasible solution is to convey the stormwater flow via an underground culvert along its current alignment, allowing the existing trees to be restabilised through backfilling the open channel and creating a shallow grassed swale, which will provide improved amenity values and safe access along the edge of the Park Lands.

Project scope and concept options

7. Through an integrated design and planning approach several programmed asset renewal and upgrade works have been added to the open channel rehabilitation project scope, to provide an overall improvement to Glen Osmond Road, Hutt Road and Carriageway Park / Tuthangga (Park 17).
8. The concept design as detailed in **Attachment A** features:
 - 8.1. Conservation of the row of sugar gum trees along Glen Osmond Road, contributing to an improved visual presentation of these Park Lands as one of the major entrances into the city through enablement of a more formal edge treatment.
 - 8.2. Rehabilitation of the existing open channel through an installation of 1800mm wide culvert along Glen Osmond Road.
 - 8.3. Renewal of road pavement, kerb and water table along Hutt Road.
 - 8.4. Renewal of road lighting along Glen Osmond Road.
 - 8.5. Renewal of degraded stormwater infrastructure along Glen Osmond Road.
 - 8.6. Construction of a new shared-use path and associated lighting within the Adelaide Park Lands along Hutt Road to strengthen the connection between the city and the southern suburbs for people walking, cycling and running. The path will extend the proposed shared-use path to be constructed under the Entry Statement project to Greenhill Road and adjacent suburbs, with a safer and more accommodating crossing at Glen Osmond Road intersection.

Impacts to existing trees

9. The alignment of the proposed culvert and shared-use path has been designed to minimise impacts to existing trees. The culvert is to be installed at the bed of the existing channel and located as far away from existing trees as possible to reduce any adverse impacts to the root systems. The alignment of the proposed shared-use path is designed to prioritise larger, healthy trees over smaller specimens and those with lower environmental and amenity values.
10. An independent arborist was engaged to provide advice on potential impacts to the existing trees from the project during construction. The advice received is most of the tree population are in good to fair overall condition and are therefore expected to tolerate the proposed level of encroachment. Refer to [Link 1](#) for the arborist report.

11. A total of eight trees are identified to be removed to allow a fit-for-purpose shared-use path and culvert to be built as part of the project. None of these trees are significant or regulated and are all less than 5m in height. Six are noted to be only in fair condition and of those six, two are noted to have surpassed useful life expectancy (refer to page 8 in **Attachment A** for further information).
12. The arborist indicated that the loss of these trees will be offset by the benefits of long-term preservation and the proposed tree replacement planting within the wider locality of the project site, with the appropriate space to thrive.
13. It was also noted that there are a few trees with substantial development impact based on the current design. It is expected that during detailed design, mitigation and protection measures will be implemented to minimise impact to these trees.
14. The Administration will explore opportunities for planting of new trees within the vicinity to offset the loss of the eight trees proposed to be removed as part of this work.

Next Steps

15. [It is recommended to] replace the existing open channel with a culvert to continue to provide reliable stormwater management services to the catchment and the surrounding locality, while addressing ongoing erosion risk to the historic avenue of trees.
16. [The project will also include] renewal of the deteriorated asset and construction of the proposed shared-use path to strengthen the connection between the city, the south-eastern Park Lands and the surrounding suburbs.
17. Council has allocated \$42,000 for detailed design as part of the 2024/25 Business Plan and Budget process. Construction is proposed to occur over two stages, commencing in the 2025/26 financial year subject to budget allocation, prioritising the replacement of the existing open channel with a culvert and renewal of the ageing assets, while the delivery of the new shared-use path will be at a subsequent stage.

Data and supporting information

Link 1 – Arborist Report

Attachments

Attachment A – Concept Report

- END OF REPORT -

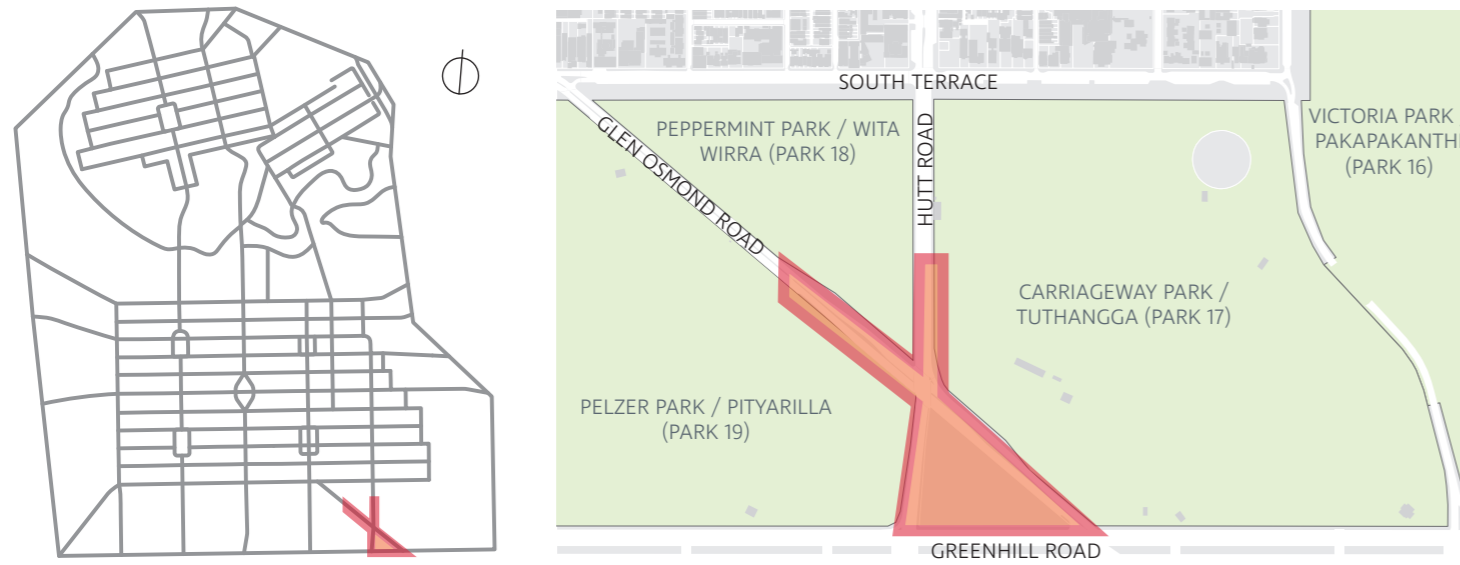
Glen Osmond Road, Hutt Road & Park 17 Improvements

Carriageway Park / Tuthangga (Park 17) & Pelzer Park / Pityarilla (Park 19)

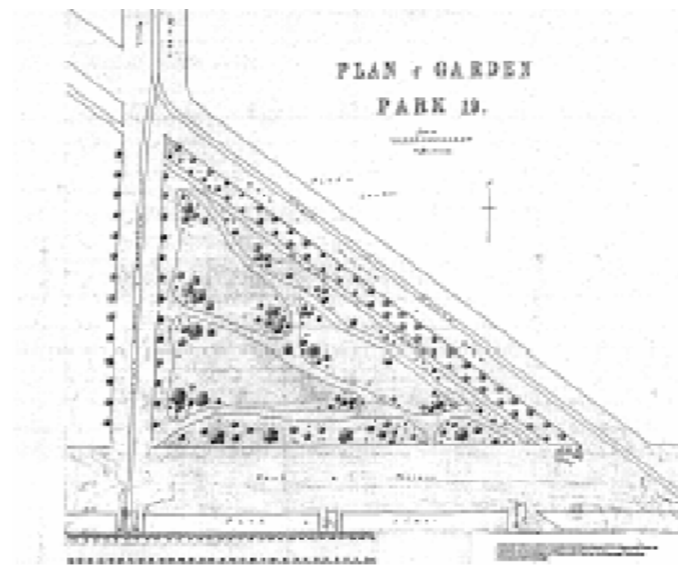
CONCEPT
JULY 2024



Context



Location Plan



'Plan of Park 19' prepared by August Pelzer 1917



Extract of a 1936 aerial photograph of metropolitan Adelaide depicting Tuthangga/Park 17

Background

The project site is predominately located within the south west corner of Carriageway Park / Tuthangga (Park 17) of the Adelaide Park Lands. This 16,300 sqm triangular portion of land bordered by Glen Osmond, Hutt, and Greenhill Roads originally comprised part of the adjoining Park 19 land parcel to the west until the 1960s when it was added to Park 17 for management purposes. As a result the underlying character of the landscape and early plantings it can be seen as more closely reflecting the previous structure and management practices of Park 19.

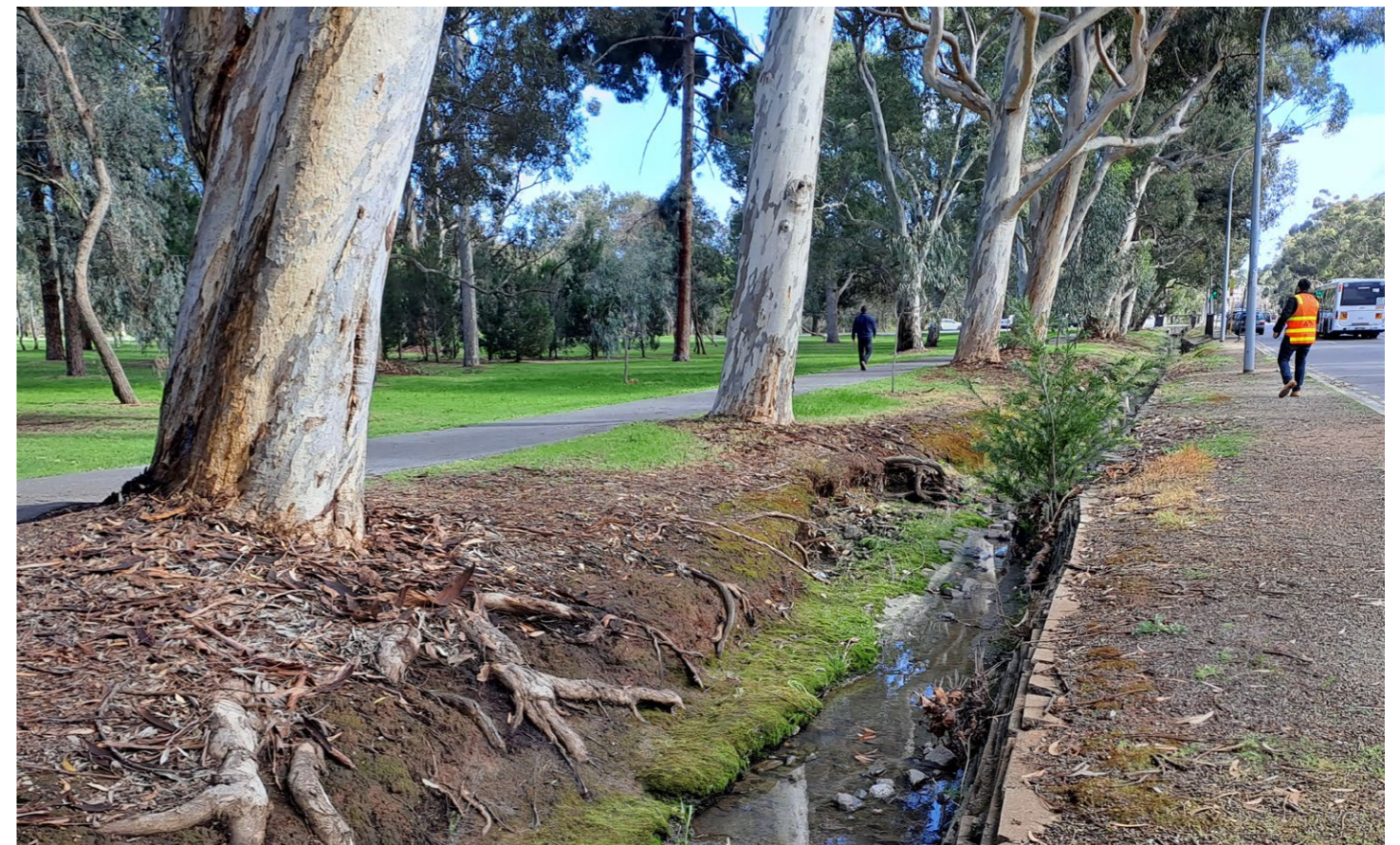
Cited in historic references to pre and post contact times, Kaurna and Aboriginal sites or activities are not linked specifically to this site but are generalised for the whole of the South Park Lands as 'a landscape regularly occupied for encampments, food harvesting, burials, and hunting activities.' References from the 1860s allude to Aboriginal people having been 'driven out' of the South Park Lands.

From this period it is thought the first City Gardener, William O'Brien, established the first shelterbelt tree plantations along the 'Glen Osmond – Mount Barker' Road in the Park Lands and at the project site, while the majority of Park 19 remained largely cleared of vegetation. Some of the shelterbelt river red gums (*Eucalyptus camaldulensis*) trees survive in the project site.

In 1915, the proposal to run a tram line through Park 19 linking Hutt Street with George Street in Parkside led to the construction of the extension of Hutt Road, including 7-foot-wide footpaths on either side; and created the new small triangular parcel of Park 19 subsequently known as Park 19A which comprises part of the project site. A new 'Plan of Garden' was conceived by City Gardener, August Pelzer, for this area as a passive recreational 'pocket park' including perimeter plantings, a meandering pedestrian pathway system around clumps of trees and shrub plantings, and the continuation of the 'Ponder Avenue' cycle track with sugar gums along its interface with Glen Osmond Road to Greenhill Road.

While the park's amenity is reduced and currently underutilised for recreational use due to the surrounding road environment, it still supports many large mature trees and more recent native tree plantings without understorey planting. The overall space is predominantly flat, draining slowly to a low point adjacent Hutt Road, which becomes inundated following moderate rainfall. The park area still contains a single sealed path beside the drainage channel along Glen Osmond Road as the present-day version of 'Ponder Avenue'.

The project site also includes the continuation of the Glen Osmond Road drainage channel extending beneath Hutt Road and terminating at the South Park Lands Creek. A visual representation of the project context is provided on page 4. (Source of historical references: Jones, D. (2007) *Adelaide Park Lands & Squares Cultural Landscape Assessment Study prepared for the Corporation of the City of Adelaide.*)



Existing drainage channel condition and majestic *Eucalyptus cladocalyx* (Sugar Gum) trees historically known as 'Ponder Avenue' which provide a dramatic entry statement to the City of Adelaide

Project Drivers

The ageing open drainage channel is the key driver for this project scope as it requires substantial rehabilitation in response to the advanced state of disrepair of its retaining materials; increasing erosion of its steep banks; and the inadequate capacity of the existing Hutt Road culvert to convey current and future estimated flow rates. As a result, a prominent row of large sugar gum (*Eucalyptus cladocalyx*) trees lining the south side of the channel are under threat from the increasing extent of soil erosion around their roots. The degraded state of the channel is also adversely impacting the presentation of this major entrance to the city.

These trees are identified as a key landscape feature in the Carriageway Park / Tuthangga (Park 17) Community Land Management Plan (CLMP) as one side of the Glen Osmond Road avenue, creating a striking impression along this major route into the City. Together with the poor presentation of the crumbling channel, the further degradation and loss of these trees through neglect would affect visual amenity, become a hazard for park and road users, and fail to align with the City's clear environmental commitment to protect the Park Lands' natural heritage and increase city-wide greening and biodiversity.

The project also presents an opportunity to renew other ageing assets such as roads, kerbing, street lighting and improve access and safety through providing a shared use path connection to Hutt Street Entry Statement and the inner southern suburbs.

Project Objectives

- Rehabilitation of degraded stormwater infrastructure and other ageing assets such as road, kerbs and lighting
- Conservation of mature, regulated and significant trees
- Creation of new pedestrian and cycling link between Hutt Street Entry Statement and the inner southern suburbs
- Improvements to safety and accessibility of crossing points at Glen Osmond Road intersection
- Improvements to access to bus stops and on-street car parks on Glen Osmond Road

Scope

The overall scope of the project consolidates the design and coordinated delivery of the following renewal components:

- Rehabilitation of open drainage channels and culverts along the southern side of Glen Osmond Road
- Rehabilitation of road pavement and renewal of kerb and gutter on Hutt Road
- New public lighting renewal along Glen Osmond Road
- New shared use path to link the Park Lands Trail and Greenhill Road

The project incorporates a number of planned renewal and upgrade components due to their interconnectivity within the project area. This includes new lighting along Glen Osmond Road, road asset renewal to Hutt Road, and a shared use path beside Hutt Road connecting adjacent suburbs to Hutt Street and the City.

Throughout the development of the concept design, numerous options were explored to manage stormwater, including; diversion of stormwater into sedimentation/detention basins, renewal of existing stormwater channels and relocation of the channel beneath Glen Osmond Road away from existing trees. However, following detailed analysis the most feasible option is to convert the channel into a culvert.

A visual representation of the project scope is provided on [page 5](#). Construction materials from the drainage channel which hold minor cultural heritage interest will be salvaged. Their reuse in the project will be determined during the detailed design phase.

Strategic Context

The Adelaide Park Lands Management Strategy (APLMS) 2015-2025 identifies opportunities for this section of Glen Osmond Road to become a feature Park Lands city gateway with public art, and an improved urban interface along Greenhill Road to increase its appeal for users along this route into the City. The Strategy also details a number of general strategies, with the following of relevance to the project:

Strategy 2.2 Establish shared walking and cycling paths with safe connections and crossing points linking the City and inner suburbs

Strategy 3.1 Develop an identifiable landscape character for each Park Lands edge.



Exposed tree roots within drainage channel

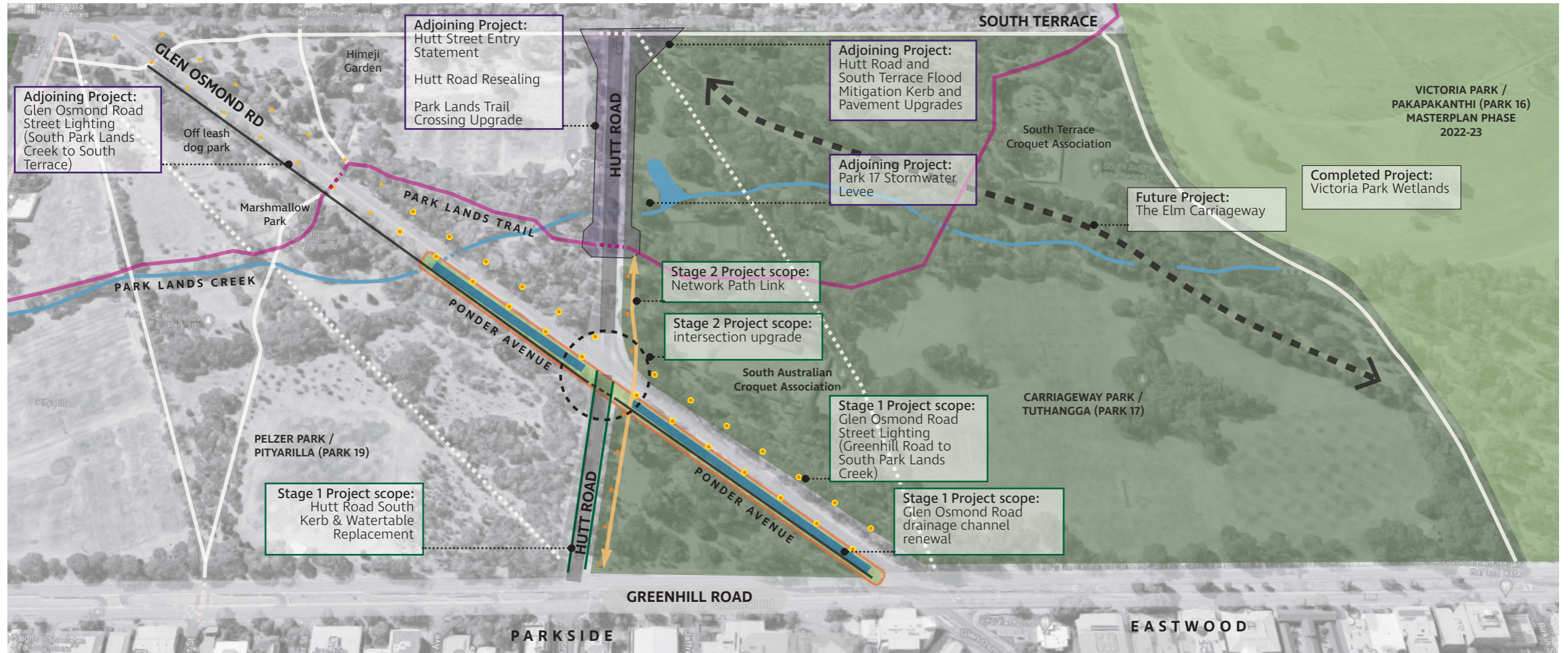


Stacked stone and concrete slab retaining wall with unsafe sheer drop into channel

Glen Osmond Road, Hutt Road & Park 17 Improvements

Overview

Scope and Surrounding Projects



Page 18



Existing shared use path and Ponder Avenue lined with Sugar Gums along Glen Osmond Road



Existing crossing and slip lane on the eastern side of Glen Osmond Road at the intersection with Hutt Road with poor waiting areas and high speed vehicle turning movements



Existing drainage channel in degraded condition



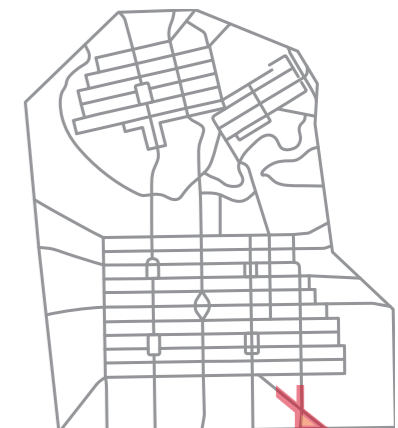
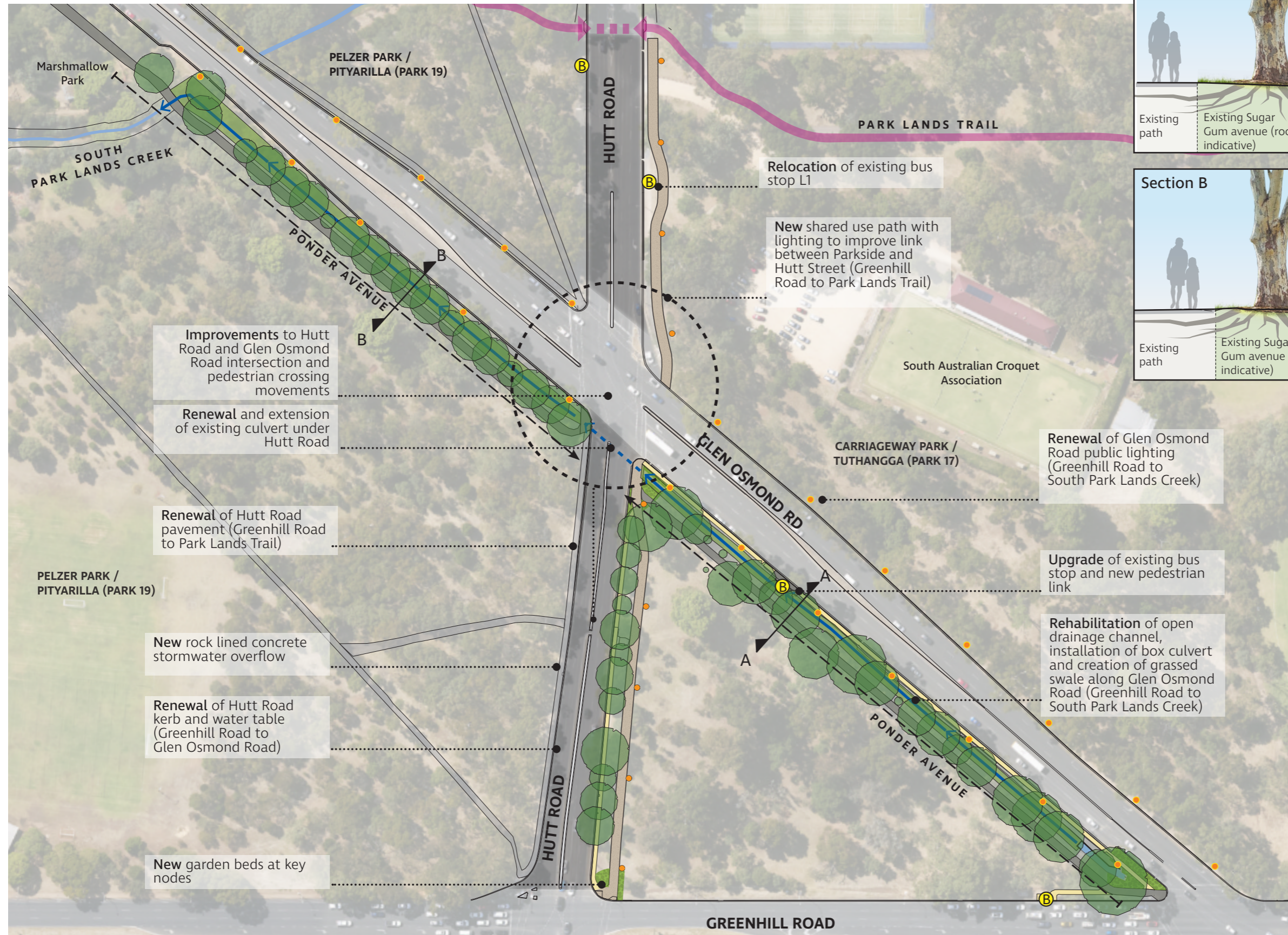
Existing degraded drainage channel during rainfall event which presents a public safety hazard



Existing Ash tree avenue on Hutt Road (east side) with restricted pedestrian access

Glen Osmond Road, Hutt Road & Park 17 Improvements

Project Scope



Location Plan

- LEGEND**
- Existing avenue trees
 - New garden bed
 - New path lighting
 - New street lights
 - Existing bus stop
 - Existing Park Lands Trail
 - Existing path
 - Shared use path
 - Drainage channel
 - Underground culvert



Glen Osmond Road, Hutt Road & Park 17 Improvements



Artist's Impression

Rehabilitated drainage channel looking north-west along Glen Osmond Road and Ponder Avenue



Glen Osmond Road, Hutt Road & Park 17 Improvements

Tree Retention

The project will retain and protect the avenue of Regulated and Significant sugar gums on Glen Osmond Road lining the shared use path historically known as 'Ponder Avenue'. The alignment of the proposed culvert and shared use path connecting the Park Lands Trail Crossing to Greenhill Road has been designed to minimise impacts to these trees whilst also addressing ongoing impacts of erosion within the drainage channel which endangers the ongoing sustainability of the trees.

159 trees were assessed within the project area. Under the Planning, Development and Infrastructure Act 2016, of those 159 trees, 70 trees are 'Unregulated Trees', 40 trees were classed as 'Regulated Trees', 45 trees were identified as 'Significant Trees' and 4 were classed as exempt due to species.

Trees identified below provides a snapshot of high value trees being retained in the project. Please refer to the Treesolve Arborist Report for further information on trees.



Glen Osmond Road, Hutt Road & Park 17 Improvements

Tree Impact

An external arborist was engaged to produce an Arboricultural Impact Assessment Report based on the Concept Design and provided recommendations regarding tree management. The report recommends that removal of eleven (11) trees would be required based on development impact or due to poor health and/or structure.

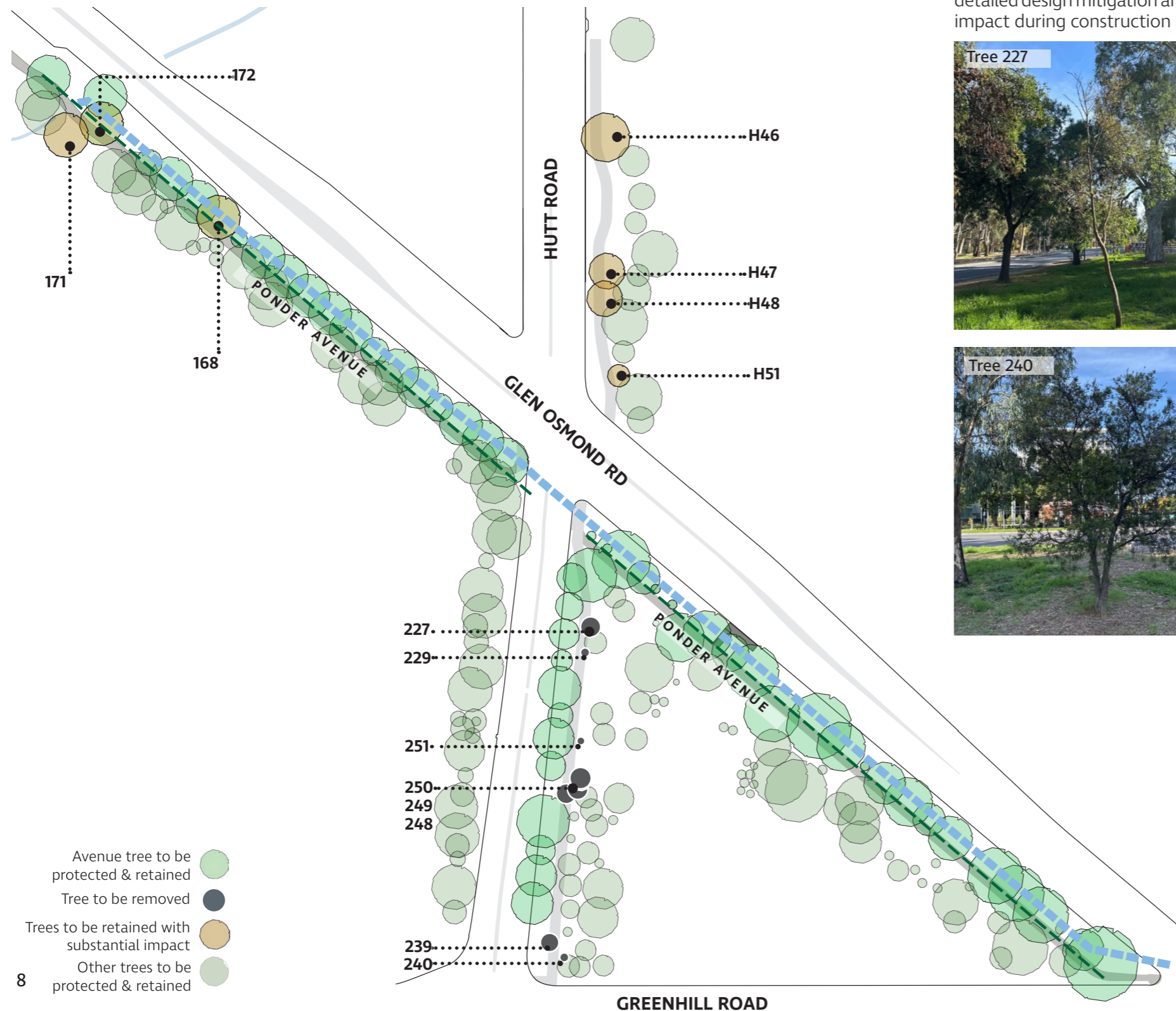
Notwithstanding this recommendation, only eight (8) trees are proposed to be removed in order to construct the shared use path along Hutt Road. These removals are balanced against the long term benefits of addressing the of renewal of the drainage channel for the Ponder Avenue trees.

The alignment of the path aims to minimise impact to high value trees whilst providing a safe and direct shared use path as an alternative to using Hutt Road. Of the eight (8) tree removals proposed; all are less than 5m in height, six

(6) are noted to be only in fair condition and of those six (6), two (2) are noted to have surpassed useful life expectancy. Tree 240, while not recommended for removal based on development impact has been proposed for removal as the tree has surpassed its useful life expectancy. Replacement trees will be included where space allows within the project site or wider locality.

As identified in the arborist's recommendation there are additional trees not in direct conflict with the project, but have been recommended for removal (163, 172, H100 and H50). These trees are recommended for removal due to poor health (1 tree is dead) and/or poor structure and will be further assessed by Council arboricultural staff.

The report also notes other trees with 'substantial development impact based on the current design. During detailed design mitigation and protection measures will be investigated and implemented to minimise development impact during construction and ensure tree sustainability.



Recommendation

Following extensive design investigations and arboricultural assessment, the following is recommended to achieve the project objectives:

- Replacement the existing open channel with a box culvert to provide reliable stormwater management to the catchment and surrounding locality, whilst addressing ongoing erosion risk to the existing historic avenue of *Eucalyptus cladocalyx* trees and existing street lighting;
- Renewal of road, bus stop and lighting assets which are interconnected with the open channel and path works;
- Construction of a shared use path to strengthen the cycling and pedestrian connection between the City, south-eastern Park Lands and inner southern suburbs
- Upgrade the Glen Osmond Road and Hutt Road Intersection to improve safety and accessibility.

Kadaltilla

Adelaide Park Lands Authority

Park Lands Leasing – Expressions of Interest: Carriageway Park / Tuthangga (Park 17) and Blue Gum Park / Kurangga (Park 20)

**Thursday, 25 July 2024
Board Meeting**

Author:
Jennifer Kalionis, Associate
Director City Culture

Public

Purpose

This report presents the outcomes of an Expression of Interest (EOI) process undertaken for two Adelaide Park Lands community facilities in Carriageway Park / Tuthangga (Park 17) and Blue Gum Park / Kurangga (Park 20). Undertaking an EOI is required by section 13 of Council's Adelaide Park Lands Leasing and Licensing Policy (Policy).

The leasing of these Park Lands facilities to community organisations and educational institutions supports the City of Adelaide Strategic Plan (2024-2028) and the key action to 'enable community-led services which increase wellbeing, social connections and participation in active lifestyles, leisure, recreation and sport'.

This report recommends to Kadaltilla / Adelaide Park Lands Authority (Kadaltilla) that it endorses the City of Adelaide offering two Park Lands Community Leases for various community sports buildings, playing fields and courts located in Parks 17 and 20, for a maximum term of five years.

Recommendation

THAT THE KADALTILLA / ADELAIDE PARK LANDS AUTHORITY ADVISES COUNCIL:

That the Kadaltilla / Adelaide Park Lands Authority:

1. Notes the Expression of Interest submissions received for the two Park Lands facilities as shown in Attachment A to Item 6.2 on the Agenda for the meeting of the Board of Kadaltilla / Adelaide Park Lands Authority held on 25 July 2024.
2. Endorses Council through the Chief Executive Officer to enter into lease negotiations with the applicants below for five-year Park Lands Lease Agreements for the sports buildings, playing fields and courts located in Parks 17 and 20:
 - 2.1. Touch Football South Australia – Carriageway Park / Tuthangga (Park 17)
 - 2.2. Pulteney Grammar School – Blue Gum Park / Kurangga (Park 20).
3. Notes that Administration will arrange a meeting with the North Western Junior Soccer Association to identify opportunities for accessing Park Lands facilities, including the playing fields programmed by the City of Adelaide in Victoria Park / Pakapakanthi (Park 16).

Implications

<p>Adelaide Park Lands Management Strategy 2015-2025</p>	<p>Adelaide Park Lands Management Strategy 2015-2025</p> <p>Acknowledges that the Park Lands are a hub for sport and recreation:</p> <ul style="list-style-type: none"> • Strategy 1.6: Strengthen the role of the Park Lands as a regional destination for competitive sport and a variety of active and passive forms of recreation. <p>The Strategy contains targets to “<i>grow organised sport by 10% with the majority of this growth being accommodated via increased utilisation of existing sport fields/facilities, rather than through additional sports zones.</i>” (Page 41)</p>
<p>2023-2028 Strategic Plan</p>	<p>Kadaltilla / Adelaide Park Lands Authority 2023-2028 Strategic Plan Strategic Plan Alignment – Expert Advice</p> <p>Key Action 4.1 - Provide advice on plans, projects, and policies for the Adelaide Park Lands.</p>
<p>Policy</p>	<p>Adelaide Park Lands Community Land Management Plan (APLCLMP)</p> <p>The APLCLMP supports leasing and licensing of various community sports facilities located within Park 17 and Park 20.</p> <p>Adelaide Park Lands Leasing and Licensing Policy (policy)</p> <p>The Expression of Interest (EOI) process was undertaken in accordance with Section 13 of the policy and the new lease agreements will be issued in accordance with the policy.</p>
<p>Consultation</p>	<p>This matter will be presented to the City Community Services and Culture Committee on Tuesday 6 August 2024.</p>
<p>Resource</p>	<p>The execution of the Park Lands Lease Agreements will be undertaken within current resources.</p>
<p>Risk / Legal / Legislative</p>	<p>The current Park Lands Community Leases that were the subject of this EOI have either expired and are in holding over to accommodate the EOI process (Park 20 – 31 May 2024) or are due to expire this year (Park 17, 31 December 2024). This report recommends entering into new lease agreements with the successful applicants.</p>
<p>Opportunities</p>	<p>Partnering with educational institutions and community organisations to provide formal recreation and sport opportunities in the Park Lands.</p>
<p>City of Adelaide Budget Allocation</p>	<p>The two leases will deliver \$25,372 in annual revenue in the 2024/25 financial year, indexed annually for the next five years.</p>
<p>Has Life of Project, Service, Initiative or (Expectancy of) Asset</p>	<p>Five-year lease agreements.</p>
<p>Ongoing Costs (eg maintenance cost)</p>	<p>The Lessees will undertake maintenance of the leased and licensed assets.</p>
<p>Other Funding Sources</p>	<p>Not as a result of this report</p>

Discussion

Background

1. The Adelaide Park Lands Leasing and Licensing Policy (Policy) requires an Expression of Interest (EOI) process to be undertaken before granting any new lease for a period of greater than 12 months (including the renewal of a lease or licence).
2. The results of this EOI process are being referred to Kadaltilla / Adelaide Park Lands Authority (Kadaltilla) for advice as the Policy requires that the outcome of all EOI submissions received be considered by Council.
3. The following two Park Lands Community Leases were subject to an EOI process:

Table 1 – Current status of Park Lands Community Lessees subject to this EOI process

Park	Facilities	Current Lessee
Carriageway Park / Tuthangga (Park 17)	Building and playing fields	Touch Football SA
Blue Gum Park / Kurangga (Park 20)	Buildings, playing fields, cricket nets and courts	Pulteney Grammar School

Expression of Interest Process and Assessment

4. An EOI process was undertaken over a three-week period commencing Monday 27 May 2024 and concluding on Friday 14 June 2024 in accordance with the Policy.
5. The EOI was promoted through Your Say Adelaide, social media posts, direct e-mails, and electronic newsletter to known community recreation and sport organisations and educational institutions, including organisations that had previously indicated an interest in leasing sporting facilities in the Adelaide Park Lands.
6. Applicants were requested to address the following assessment criteria:
 - 6.1. Community Benefit (40%)
 - 6.1.1. The application is for community-level sport.
 - 6.1.2. The proposed use will benefit more than one user group.
 - 6.1.3. There is significant demand for the sport(s).
 - 6.1.4. Number of participants per session.
 - 6.1.5. Whilst not exclusive, the application caters for City residents, or
 - 6.1.6. People from underrepresented groups (Aboriginal and Torres Strait Islanders, women/girls, people on low incomes, newly arrived migrants, and refugees, international students, and people with a disability).
 - 6.2. Activation (40%)
 - 6.2.1. The application results in the facilities being used frequently i.e. can demonstrate year-round use by the applicant and its sub-lessees.
 - 6.2.2. The activities complement the existing facilities and maximise usage relative to the sports field carrying capacity (and potential capacity).
 - 6.2.3. The application caters for a wide variety of participants (e.g. by age, gender, cultural background, ability) and types of activities.
 - 6.2.4. The application does not adversely impact on residents or other users of the park.
 - 6.3. Management/Governance/Risk (20%)
 - 6.3.1. The applicant is financially reliable and has no outstanding debt or grant acquittals with Council or has no unresolved breach of an existing lease or licence agreement with the City of Adelaide or another council.
 - 6.3.2. The applicant is affiliated with a peak or governing body.

6.3.3. The applicant can demonstrate experience in managing facilities and has a sound governance/management model.

7. At the closure of the EOI period, five submissions were received from the following organisations:

- 7.1. Touch Football South Australia (Park 17)
- 7.2. South Australian Amateur Soccer League (Park 17)
- 7.3. Pulteney Grammar School (Park 20)
- 7.4. North Western Junior Soccer Association (Park 20)
- 7.5. City of Adelaide Lions Club (Park 20)

8. An assessment of the submissions was undertaken in accordance with the Probity Plan developed for this EOI process. The table below shows the weighted scores for each submission:

Table 2 – EOI weighted (%) scores.

	Community Benefit 40%	Activation 40%	Management /Governance 20%	Total
Expression of Interest: Park 17				
Touch Football South Australia	4.8	5.2	2.4	12.4
South Australian Amateur Soccer League	3.2	3.2	1.8	8.2
Expression of Interest: Park 20				
Pulteney Grammar School	5.6	5.2	3	13.8
North Western Junior Soccer Association	4	2.8	2	8.8
City of Adelaide Lions Club	3.2	2.8	1.6	7.6

9. The scoring scale is detailed below:

- 9.1. Excellent = 5
- 9.2. Good = 4
- 9.3. Satisfactory = 3
- 9.4. Unsatisfactory = 2
- 9.5. Poor = 1
- 9.6. No Information Provided = 0.

10. The EOI process was managed internally with submissions assessed by a panel consisting of the following members of council Administration:

- 10.1. Project Lead, Community Lifestyle
- 10.2. Community Leasing Coordinator
- 10.3. Community Facilities Coordinator.

Carriageway Park/Tuthangga (Park 17)

11. The EOI undertaken for Park 17 (see Image 1) was for:

- 11.1. A single-storey community building with basic amenities
- 11.2. Three sports fields approximately 2.84ha in total with lighting.



Image 1: Location Plan Carriageway Park / Tuthangga (Park 17)

12. At the closure of the EOI period, two submissions were received for Park 17.
 - 12.1. Touch Football South Australia.
 - 12.2. South Australian Amateur Soccer League
13. The EOI panel reviewed the submissions from Touch Football South Australia and the South Australian Amateur Soccer League against the selection criteria and determined that:

Touch Football South Australia

 - 13.1. Demonstrated capacity to program the facilities year round with 13,693 participants utilising the facilities on an annual basis.
 - 13.2. Successfully illustrated their ability to align with the Adelaide Park Lands Management Strategy (APLMS) and strengthen the role of the Park Lands as a regional destination for competitive sport and a variety of active and passive forms of recreation.
 - 13.3. Supported the purpose for which the land is held as stated in the Adelaide Park Lands Community Land Management Plan (CLMP).
 - 13.4. As a current Lessee (since January 2020), has demonstrated the capacity to maintain facilities to a standard acceptable to the City of Adelaide and the community and is up to date with all Park Lands leasing requirements.

South Australian Amateur Soccer League (SAASL)

 - 13.5. Indicated use of the facilities on weeknights (training) and weekends (competition) during the soccer season.
 - 13.6. Men's participation only although indicated a desire to engage with women's and junior teams in the future.
14. It is recommended that Touch Football South Australia be granted a second successive five-year lease agreement for the facilities in Park 17.
15. The EOI application submitted by Touch Football South Australia included the following sublessees who utilise the facilities in Blue Gum Park/Kurangga (Park 20) on an annual basis.
 - 15.1. Adelaide Hockey Club
 - 15.2. School Sport South Australia
 - 15.3. South Australian Catholic Secondary School Girls Sport Association
 - 15.4. South Australian Catholic Primary Schools Sports Association
 - 15.5. South Australian Christian Sports Association
 - 15.6. Sport Association for Adelaide Schools

16. Based on the significant usage demonstrated by Touch Football South Australia and the six sub-lessees, shown in [Link 1](#) it is recommended that additional sub-lessees be limited to short-term and ad-hoc use.
17. Given this, we do not foresee further permanent long-term sub-lessees being able to utilise the sporting fields and, on this basis, sub-lease discussions with SAASL are not proposed as their usage requirements cannot be met.

Blue Gum Park/Kurangga (Park 20)

18. The EOI undertaken for Park 20 (see Image 2) was for:
 - 18.1. Two single-storey community buildings with basic amenities
 - 18.2. Three storage facilities
 - 18.3. Six sports fields approximately 8.9ha in total, with some sports lighting
 - 18.4. Ten cricket nets
 - 18.5. Two courts (open for community access).



Image 2: Blue Gum Park / Kurangga (Park 20)

19. At the closure of the EOI period, three submissions were received:
 - 19.1. Pulteney Grammar School
 - 19.2. North Western Junior Soccer Association
 - 19.3. City of Adelaide Lions Club
20. The EOI panel reviewed the submissions from Pulteney Grammar School, North Western Junior Soccer Association and the City of Adelaide Lions Club against the selection criteria and determined that:

Pulteney Grammar School

 - 20.1. Demonstrated capacity to program the facilities year round and sub-lease to numerous organisations including neighbouring schools, state sporting associations, and other sporting clubs.
 - 20.2. Supported the purpose for which the land is held as stated in the APLCLMP.

- 20.3. Successfully illustrated their ability to align with the APLMS and strengthen the role of the Park Lands as a regional destination for competitive sport and a variety of active and passive forms of recreation.
- 20.4. As a current Lessee for over 100 years, Pulteney Grammar School has demonstrated the capacity to maintain facilities to a standard acceptable to the City of Adelaide and the community and is up to date with all Park Lands leasing requirements.

North Western Junior Soccer Association

- 20.5. Demonstrated strong junior participation with over 3,000 junior male and female soccer participants.
- 20.6. Use was primarily limited to the soccer season.

City of Adelaide Lions Club

- 20.7. Indicated minimal use year-round.
- 20.8. Use was primarily limited to the summer season

- 21. It is recommended that the Pulteney Grammar School be granted a five-year lease agreement for the facilities in Park 20.
- 22. The EOI application submitted by Pulteney Grammar School included the following sublessees who will continue to utilise the facilities in Blue Gum Park/Kurangga (Park 20) on an annual basis.
 - 22.1. South Australian Cricket Association (SACA) Women's Cricket Program
 - 22.2. Century Cricket Club
 - 22.3. South Australian National Football League (SANFL) Umpires
 - 22.4. Pulteney Old Scholars Association (POSA) Men's Cricket
 - 22.5. POSA Men's Football
 - 22.6. POSA Women's Football
 - 22.7. Glenelg Cricket Club
 - 22.8. POSA Men's Soccer
 - 22.9. POSA Women's Soccer
 - 22.10. Sturt Cricket Club
 - 22.11. Walkerville Cricket Club
 - 22.12. St Aloysius College
 - 22.13. Michael Aish Football Academy
 - 22.14. Sports Association for Adelaide School
- 23. The North Western Junior Soccer Association's needs cannot be met at Park 20 through a sublease. Given that the Association represents the participation of over 3,000 junior boys and girls in community sports, it is recommended that the Administration work with the Association to identify opportunities for accessing Park Lands facilities, including the playing fields programmed by the City of Adelaide in Victoria Park / Pakapakanthi (Park 16).

Lease Agreements – Terms and Conditions

- 24. It is recommended that the following high-level terms and conditions be negotiated as part of the two new lease agreements:
 - 24.1. Term: Five years
 - 24.2. Building Rent: \$55 per square metre, discounted by 70% (educational institutions) and 80% (community recreation and sport organisations) and reviewed annually by 4%.
 - 24.3. Licence Fees (where applicable): As per the City of Adelaide's annually endorsed Fees and Charges, applied from 1 July each year.
 - 24.4. Permitted Use: Community sport, physical education and associated community development (not-for-profit) activities.

Next Steps

25. Subject to Kadaltilla's endorsement, Administration will recommend to the City Community Services and Culture Committee on 6 August 2024, that the two Park Lands Community Lease Agreements for five years are negotiated with the successful applicants.
 26. Subject to Council's approval, Administration will notify all EOI applicants of the outcome.
 27. The successful applicants will be given until 30 September 2024 to sign and return the new Park Lands Community Lease Agreements for execution by Administration.
 28. Administration will liaise with the North Western Junior Soccer Association to identify opportunities for this organisation to access Park Lands facilities, including accessing the playing fields programmed by the City of Adelaide in Victoria Park / Pakapakanthi (Park 16).
-

Attachments

Attachment A – Expression of Interest submissions for two Park Lands Community Leases – June 2024

- END OF REPORT -



Your Say
Adelaide

EXPRESSION OF INTEREST

FOR PARK LANDS COMMUNITY FACILITIES

Expression of Interest closes 5:00 pm, Friday 14 June 2024

PROJECT INFORMATION

The Adelaide Park Lands are a highly valued community asset. When the existing licences on community sporting facilities in the Park Lands expire, in the interests of fairness and opportunity, such facilities are made available to other community groups who may wish to utilise them. This is carried out through an open expressions of interest process.

Background

The current community leases for renewal are:

- Carriageway Park/Tuthangga (Park 17) – Sports Fields + club rooms
- Blue Gum Park/Kurangga (Park 20) – Sports Fields, courts, club rooms + storage facilities

NOTE: Leases up to five years will be offered in accordance with the City of Adelaide Park Lands Leasing and Licensing Policy.

NOTE: All Expression of Interest (EOI) applications should assume responsibility for all repairs and maintenance for all infrastructure associated with the areas applied for (including buildings, irrigation, lighting etc – where applicable) and accept the condition of the facilities as they are.

NOTE: A provision of 30 days from the “negotiation and execution date” will be given to the successful applicant to sign the new lease/licence before Council begins negotiations with other applicants.

EXPRESSION OF INTEREST

FOR PARK LANDS COMMUNITY FACILITIES

Your Say
Adelaide



PARK 20

PARK 17

Customer Centre - 25 Pirie Street, Adelaide – (08) 8203 7203



EXPRESSION OF INTEREST

FOR PARK LANDS COMMUNITY FACILITIES

Your Say
Adelaide

This EOI has been triggered by the expiration of the current leasing arrangements of these facilities and it is a requirement of the Adelaide Park Lands Leasing and Licencing Policy that an EOI process be undertaken before the consideration of any new tenure (including the renewal of a lease or licence) in the Park Lands. A copy of this policy can be seen in Attachment 1.

Licensing and Leasing of the Park Lands

The City of Adelaide is the custodian of the Adelaide Park Lands, and to activate relevant areas, looks to partner with community sporting organisations and educational institutions through the licensing of sporting fields and leasing of buildings.

Under the relevant chapters of the Community Land Management Plan, the sporting fields will operate under a licence arrangement which provides the licensee with first right of use (as nominated and approved). During the times where the sporting fields are not being used by the licensee or subsequent sub-lessees, they are then available to the public. Sports buildings operate under a lease arrangement giving lessees sole occupancy for co-operative use and sub-letting consistent with the permitted uses.

It is proposed that, as a minimum, the responsibility of holding a lease/licence agreement with the City of Adelaide for buildings and sports fields in the Park Lands is that the lessee:

- Uses the leased and licenced area in accordance with the approved Permitted Use (being community sport related).
- Pay all rent and licence fees as per the Adelaide Park Lands Leasing and Licencing Policy and Council's annually endorsed Fees and Charges schedule.
- Pays all costs associated with the use of the building and licensed area (i.e. telephone, electricity, gas, oil, water, and any other services/utilities).
- Maintains and repairs any buildings, fixtures, fittings, or structures erected, fixed, or placed in, on or under the Lease and Licence Area in good and safe repair and condition, such as:
 - drains, pipes, fencing, goal posts, person holes, reticulation equipment, all electrical equipment (including floodlights); and similar services.
 - in cases where playing surfaces form the whole or part of the Licence Area, perimeter fencing, net posts and perimeter access gates, sports lights, irrigation etc.
- Will hold appropriate insurance policies (i.e. Public Liability, Building and Infrastructure insurance)
- Acknowledges that the building and licenced area may not be available for use and occupation during public or special events held in the Park Lands
- Acknowledges that the licensed area will be used by the broader community when not in use by the lessee for informal recreation and sport activities.
- Encourage multipurpose usage of facilities where appropriate through sub-letting and casual hire arrangements.

EXPRESSION OF INTEREST

FOR PARK LANDS COMMUNITY FACILITIES

Your Say
Adelaide

Assessment Information

Application Process

- The EOI information package provides overall details for the park and further information including relevant details can be found on the Your Say Adelaide website at yoursay.cityofadelaide.com.au/expression-of-interest-for-park-lands-community-facilities.
- Information provided in your application will be publicly available through Council's agendas and minutes.
- EOI applications must be submitted by the due date. Late applications will not be accepted.
- After the closing date, all EOI applications will be acknowledged in writing via email.
- All EOI applications received will be assessed by a review panel against the assessment criteria provided on the EOI Form.
- Given the competitive nature of this EOI process, staff are unable to offer personalised advice or information to applicants as doing so could potentially provide an unfair advantage to certain applicants over others.
- Council reserves the right to not select any proponent and may choose to conduct a new EOI process.
- Leases up to five years will be offered in accordance with the City of Adelaide Park Lands Leasing and Licensing Policy.

EOI Indicative Timelines

EOI opens:	25 May 2024
EOI closes:	14 June 2024
Review submissions:	19 June 2023
Report to Kadaltilla/APLA*:	25 July 2024
Report to CCSCC**:	6 August 2024
Council Meeting	13 August 2024
Notify applicants of Council decision:	14 August 2024
Lease Negotiated and Executed:	1 September 2024

*Adelaide Park Lands Authority

**City Community Service and Cultural Committee

Eligibility Requirements – What is Council looking for?

The City of Adelaide is seeking EOI's from community sporting organisations (including educational institutions) that can demonstrate an ability to partner with Council to deliver on the outcomes sought for the city, including increased access to and use of the Park Lands.

EXPRESSION OF INTEREST

FOR PARK LANDS COMMUNITY FACILITIES

Your Say
Adelaide

Who can apply?

Applications will be considered from:

- Organisations or groups that are legally constituted as an incorporated association.
- Not for profit companies limited by guarantee.
- Aboriginal and Torres Strait Islander Corporations (under the Aboriginal and Torres Strait Islander Act 2006)
- Educational Institutions

How do we apply?

Applicants must provide:

- A completed expression of interest application form within this pack if completed in hard copy or online by the closing date.
- Evidence of current public liability insurance to the value of \$20M.

Assessment Criteria

Community Benefit (40%)

- The application is for community level sport.
- The proposed use will benefit more than one user group.
- There is significant demand for the sport(s).
- Number of participants per session.
- Whilst not exclusive, the application caters for City residents or
- People from underrepresented groups (Aboriginal and Torres Strait Islanders, women/girls, people on low incomes, newly arrived migrants and refugees, international students and people with a disabilities).

Activation (40%)

- The application results in the facilities being used frequently i.e. can demonstrate year-round use by the applicant and its sub-lessees.
- The activities complement the existing facilities and maximises usage relative to the sports field carrying capacity (and potential capacity).
- The application caters for a wide variety of participants (e.g. by age, gender, cultural background, ability) and types of activities.
- The application does not adversely impact on residents or other users of the park.

Management/Governance/Risk (20%)

- The applicant is financially reliable and has no outstanding debt or grant acquittals with Council or have an unresolved breach of an existing lease or licence agreement with the City of Adelaide or another council.
- The applicant is affiliated with a peak or governing body.
- The applicant can demonstrate experience in managing facilities and has a sound

EXPRESSION OF INTEREST

FOR PARK LANDS COMMUNITY FACILITIES

Your Say
Adelaide

governance/management model.

What are the Expression of Interest Submission Requirements?

Please read the **Application Form** at the end of the document and relevant attachments before commencing the submission process. Your submission must:

1. Include Details of Organisation, and
2. Address each section of the Assessment Criteria.

Documents

Download 1 - Lease and Licence Policy

Download 2 - Sports Facility Details + Map (Park 17)

Download 3 - Sports Facility Details + Map (Park 20)

How do I provide my submission?

Online

To apply online visit <https://www.cityofadelaide.com.au/community/get-involved/eoi-park-lands-community-facilities/> or email your EOI to activecity@cityofadelaide.com.au.

Hardcopy

Written submissions can be dropped off at the Customer Centre at 25 Pirie Street or addressed to:

Att: Jamie Stefanato
Expression of Interest
[Insert here the facility you are applying for]
GPO Box 2252, Adelaide SA 5001

All applications must be received by 5:00 pm, Friday 14 June 2024.

For enquires please contact:

Jamie Stefanato

Community Facilities Coordinator – Community

Lifestyle T: (08) 8203 7056

E: j.stefanato@cityofadelaide.com.au

Or visit <https://www.cityofadelaide.com.au/community/get-involved/eoi-park-lands-community-facilities/>



**EXPRESSION OF INTEREST FORM
FOR PARK LANDS COMMUNITY FACILITIES**


SECTION 1: ORGANISATION DETAILS					
1.1	Organisation/Club Name	Touch Football South Australia (TFSA)			
1.2	Type of Organisation	<i>(Tick multiple boxes if required)</i> <input checked="" type="checkbox"/> Not for Profit Organisation <input type="checkbox"/> Aboriginal and Torres Strait Islander Entity <input type="checkbox"/> Educational Institution (Public) <input type="checkbox"/> Educational Institution (Private) <input type="checkbox"/> Commercial Organisation <input type="checkbox"/> Social Enterprise			
1.3	Is your organisation?	<input type="checkbox"/> Based in the city. <input checked="" type="checkbox"/> Active in the city. <input type="checkbox"/> Not currently based or active in the city. <input checked="" type="checkbox"/> Currently holding a head lease/licence in the Adelaide Park Lands.			
1.4	Postal Address	Unit	13	Street Number	18-28
		Street Name	Gray Street		
		Suburb	Kilkenny	Postcode	5009
1.5	Contact Details	Primary Contact Person		Secondary Contact Person	
	First Name	Renee		Andrea	
	Surname	Bryant		van Metzinger	
	Position Title	State Manager		Community Sports Coordinator	
	Mobile	0401 999 715		0401 356 918	
	Email Address	renee.bryant@touchfootball.com.au		andrea.vanmetzinger@touchfootball.com.au	
1.6	Public Liability Insurance	A current copy of my organisation's Public Liability Insurance Certificate (minimum \$20 million) is attached. <input checked="" type="checkbox"/> YES <input type="checkbox"/> NO			
SECTION 2: ACTIVITY AND PARTICIPANT DETAILS					
2.1	Sport or Activity	Touch Football			
2.2	Level of competition <i>List the level/division. If</i>	Juniors (School years), Social, Masters, State			

	some teams compete at different levels, please indicate teams separately.																						
2.3	<p>What competition/league do you participate in?</p> <p><i>If some of your teams participate in different competitions, please indicate separately and if you do not participate in a competition/league then indicate N/A.</i></p>	<p>City Touch weekly social competition summer season x 3 nights (Oct - Feb)</p> <p>City Touch weekly social competition winter season x 3 nights (May - Aug)</p> <p>City Touch weekly social competition autumn season x 1 night (Mar - May)</p> <p>TFSA League weekly elite competition x 1 night (Oct - Dec)</p> <p>All Schools Mixed - High School 1 day event (August)</p>																					
2.4	<p>What demand is there for your sport/activity within Adelaide?</p> <p><i>Please provide statistics where possible.</i></p>	<p>Number of Participants in 2022/23 (financial year)</p> <p>Full Active Membership- Senior 2313 (1487 unique)</p> <p>Full Active Membership- Junior 467 (353 unique)</p> <p>Program Participants 161</p> <p>Event Participants 173239</p>																					
2.5	<p>Participation Information – <i>Figures may be approximate but must reflect the total number of players participating in activities on sport fields applied for in this application for the length of the season</i></p> <table border="1" style="width: 100%; border-collapse: collapse;"> <thead> <tr> <th style="width: 30%;"></th> <th style="width: 35%; text-align: center;">Junior</th> <th style="width: 35%; text-align: center;">Senior</th> </tr> </thead> <tbody> <tr> <td>Number of Male Participants</td> <td style="text-align: center;">221</td> <td style="text-align: center;">719</td> </tr> <tr> <td>Number of Female Participants</td> <td style="text-align: center;">619</td> <td style="text-align: center;">430</td> </tr> <tr> <td>Total Number of Participants</td> <td colspan="2" style="text-align: center;">1989</td> </tr> <tr> <td>Number of Male Teams <i>(if juniors please list age division e.g. u13)</i></td> <td style="text-align: center; font-size: 24pt;">18</td> <td style="text-align: center;">44</td> </tr> <tr> <td>Number of Female Teams <i>(if juniors please list age division e.g. u13)</i></td> <td style="text-align: center;">60</td> <td style="text-align: center;">4</td> </tr> <tr> <td>Total Number of Teams</td> <td colspan="2" style="text-align: center;">(Mixed - 76) - Total - 202</td> </tr> </tbody> </table> <p>Will your activity cater for city residents or people from underrepresented population groups? <i>(e.g. women and girls, people with a disability, newly arrived migrants and refugees, Aboriginal and Torres Strait Islanders, international students, people on low incomes)</i></p> <p><input checked="" type="checkbox"/> YES <input type="checkbox"/> NO</p> <p><i>If yes, please provide details:</i> Touch Football is a unique sport where people of all genders, ages and backgrounds can participate together in a social atmosphere. The focus of the TFSA office is to increase junior and women's participation numbers, leveraging through existing connections.</p>			Junior	Senior	Number of Male Participants	221	719	Number of Female Participants	619	430	Total Number of Participants	1989		Number of Male Teams <i>(if juniors please list age division e.g. u13)</i>	18	44	Number of Female Teams <i>(if juniors please list age division e.g. u13)</i>	60	4	Total Number of Teams	(Mixed - 76) - Total - 202	
	Junior	Senior																					
Number of Male Participants	221	719																					
Number of Female Participants	619	430																					
Total Number of Participants	1989																						
Number of Male Teams <i>(if juniors please list age division e.g. u13)</i>	18	44																					
Number of Female Teams <i>(if juniors please list age division e.g. u13)</i>	60	4																					
Total Number of Teams	(Mixed - 76) - Total - 202																						

SECTION 3: FACILITY REQUIREMENTS (MATCHES/TRAINING/RACES)

3.1	Please insert your competition requirements (examples provided below)	<p>Start Date must be on or after 1 April 2023 End date must be on or before 31 March 2024</p>				
Day of the week	Season (Winter, Summer, or full year) please provide provisional start and end dates	Start Time (AM/PM)	Finish Time (AM/PM)	Approximate number of sessions required	Which teams will be using the facility for each session and will it be used for competitions or training	
Saturday	Winter 10 April - 15 September 22	10.00am	11.30am	10 Senior Matches/sessions per field.	Senior men's team for matches.	
Wednesday	Full Year 1 April 22 – 31 March 23	3.30pm	6.30pm	50 Junior and Senior training sessions across the winter and summer season. 20 Sessions Tuesday.	Women's senior teams training. Tuesdays: Women's training rides and come and try sessions. Wednesdays: Men's racing events.	
Tuesday & Wednesday	Summer 1 Oct 22 – 31 March 23	5.00pm	9.00pm	20 sessions Wednesday.		

Day of the week	Season (Winter, Summer, or full year) please provide provisional start and end dates	Start Time (AM/PM)	Finish Time (AM/PM)	Approximate number of sessions required	Which teams will be using the facility for each session and will it be used for competitions or training
Mon, Wed, Thurs	Winter (15 May - 14 Sept)	5pm	10:30pm	3 x weekly (Mon, Wed, Thurs) x 14 Rounds	City Touch Social competition
Tues, Wed, Thurs	Summer (17 Oct - 7 March)	5pm	10:30pm	3 x weekly (Tues, Wed, Thurs) x 14 Rounds	City Touch Social competition
Tuesdays	Summer (17 Oct - 12 Dec)	5pm	7pm	Tuesdays - 9 rounds	City Touch junior competition
Fridays & Sundays	Summer (8 Oct - 10 Dec)	5pm 9am	10:30pm 1:30pm	Friday & Sundays, 9 Rounds plus finals	TFSA League competition
Sat & Sun	Summer (19 Nov - 3 March)	10am	1pm	15 Sessions, including training	SA Heat Senior Program training
Sat & Sun	Winter (21 May - 17 Sept)	10am	1pm	15 Sessions, including training weekends	SA Heat Junior Program training
Sat & Sun	Winter (21 May - 17 Oct)	10am	1pm	19 Sessions, including training weekends	School Sport SA Under 12 & 15 Represent
Thursday	24th August	8am	3:30pm	Annual Event	All Schools Mixed Competition

SECTION 4: COMMENTS	
4.1 Additional Comments Provide any additional comments in support of your application.	Please see attached file.
SECTION 5: DECLARATION	
<ul style="list-style-type: none"> • I confirm that the information I have provided in this form is accurate and complete. • I understand that submission of an expression of interest does not guarantee that my application will be successful. • I understand that to have this application considered, a Certificate of Currency is required. • I have read and understood the Park Lands Lease and Licence Policy and agree to comply with all conditions set out therein. 	
First Name	Renee
Signature	
Surname	Bryant
Submission Date	14/06/2024



Expression of Interest – Carriage Way Park/Tuthangga Park 17

Additional Comments

TFSA is expressing an interest in securing the lease of Carriage Way Park/Tuthangga Park 17 for a period of 5 years.

TFSA has operated out of this facility for 42 years and has held the head lease for the last 5 years and created a home for Touch Football in South Australia and Adelaide. TFSA use no other grounds or facilities other than Carriage Way Park/Tuthangga Park 17 and therefore the location is the most preferred facility for Touch Football due to its centrality, design and current utilization as the main Touch Football facility in Adelaide.

TFSA offers opportunities for members and participants to be involved in Touch Football from grassroots through to elite and caters for all ages, genders and cultures. Park 17 provides a perfect spot for Touch Football participants to enjoy the sport all year round whilst also keeping the space open for use by community members and other sporting bodies. Touch Football, not requiring any fencing around fields, also allows for greater access and opportunities for what the space can be used for.

Additional to this the building situated on the corner provides a clubhouse environment for TFSA weekly participation and associated events and facilitation of numerous technical accreditation and training courses (referee and coach). The building has toilets, change rooms, storage, canteen space and is used as a general shelter area for participants. TFSA is actively seeking grants to improve facilities as feedback from membership has indicated this is a key hinderance on growth potential.

Other Parties/User Groups:

TFSA has strong relationships with other sporting organisations who use the space.

- South Australian Catholic Secondary School Girls Sport Association (SACSSGSA) (Letter of Support Attached)
- South Australian Catholic Primary Schools Sports Association (SACPSSA) (Letter of Support Attached)
- Adelaide Hockey Club (AHC)- Minkey Hockey
- School Sport South Australia (SSSA)
- South Australian Christian Sports Association (SACSA)
- Sport Association for Adelaide Schools (SAAS)
- National Rugby League South Australia (NRLSA)

Evidence of Relationship with above Parties:

TFSA collaborates closely with SSSA on the delivery of a wide variety of Touch Football programs and event, including the School Sport SA 7/8, 9/10 and 11/12 Knock Out competitions as well as the U12 and U15 representative program which are the stepping-stones to representing the SA Heat brand at under 16 and 18 levels.

TFSA has a strategic alignment with both the NRL and NRLSA to improve awareness of both sports in a non-traditional Touch Football or League location and are looking to involve NRLSA in future events at Park 17.



Touch Football Australia – Touch Football SA office
U13, 18-28 Gray St, Kilkeny SA 5009
Phone: +61 8 8132 0712
www.touchfootball.com.au/SA
ABN 55 090 088 207



Junior players traditionally receive their first taste of Touch Football, and this is done through the programs offered within the school system, such as SACSSGSA, SACPSSA, SACSA and SAAS whose events use Park and TFSA referees. This creates a sense of familiarity amongst participants from a young age with the venue. There is no other such venue in Adelaide which would cater for these events to be held.

Competitions	Date	Usage	Participants	Age	Gender	Division
Events						
SSSSA 7/8, 9/10 and Open Knockout	March/May/Nov	8 separate full days	1,200	Ages 11-17 years old	Both	Juniors
SACSA Touch Football Carnivals	May/Nov	3 separate full days	540	Ages 12-17 years old	Both	Juniors
Catholic School Games	September	1 week carnival-full days	2500	Ages 5-12 years old	Both	Juniors
SACSSGSA Saturday Morning Girls Competition	Term 1 & Term 4	Saturday mornings	550	Ages 12-17 years old	Female	Juniors
			4790			

Investment

TFSA has previously invested into this facility, by installing field lighting which has created broader usage opportunities, and more recently TFSA has invested at the location by installing GAP meter irrigation to the venue, receipts and evidence attached. TFSA is committed to making improvements to facilities which are aligned with the environment.

Inclusion

TFSA recognizes that Carriage Way Park/Tuthangga Park 17 (Zone 4) are the traditional lands of the Kaurna people and through recognition of this has always treated this area with the utmost respect. Touch Football Australia is a member of Pride in Sport and continues to strive in this area of inclusion. With the new strategic cycle currently underway, a focus will be on the environment and creating a climate plan along with working closer with immigrant and multicultural communities.





Touch Football Participation Numbers

The table below provides an overview of Touch Football participation in South Australia.

Category	Number of Participants in 2022/23
Full Active Membership- Senior	2313 (1487 unique)
Full Active Membership- Junior	467 (353 unique)
Program Participants	161
Event Participants	239
School Delivered Programs and Events	4325
School Managed Programs and Events	6171
Accredited Volunteers (course completed)	17
Total	13,693

Facility Management

TFSA propose to continue to manage the facility as the sole operator.

TFSA operates under a unified governance model with two staff employed in the South Australian office; broader governance model extends to a national office providing the South Australian office with a support structure of over 20 staff.

With an eye on the future, TFSA is actively seeking to apply for federal and state grant opportunities as well as work closely with its national office to develop Carriage Way Park/Tuthangga Park 17 (Zone 4) into the peak Touch Football facility in South Australia.

This includes:

- Internal aesthetic refresh of Clubrooms to create a more enjoyable experience for all users
- Upgrade of clubrooms to provide disability access
- Upgrade of space around the clubrooms including lighting and access to car parks to ensure safety of all users
- Upgrade of playing field surface to create more enjoyable experience for all users
- Upgrade of playing field lighting to create a more enjoyable experience and greater accessibility for all users



Catholic Secondary Girls Sport South Australia

Provided by SA Catholic Secondary School Girls Sports Association



To whom it may concern,

The South Australian Catholic Secondary School Girls Sport Association currently uses Park 17 for our Secondary Girls Touch Football Competition.

We are a not for profit organisation that strives to provide a range of sporting opportunities for female secondary school students who attend associated Catholic, Independent and State Schools across Adelaide and South Australia. Even though we are a Catholic Association we welcome the inclusion of many different schools across Adelaide, including from both the public and private sector.

Currently we play host the largest offering of Touch Football for school age females in SA and that is something we are extremely proud of. Our main mission as an Association is to promote all aspects of Extra Curricular Girls Sport. Underpinning the Associations policies, philosophies and strategies of Catholic traditions and ethos, we try to acknowledge and understand the vital role sport plays in an individual's overall development and wellbeing.

Our competition held at Park 17, currently runs for a minimum of 6 weeks in Term 1 and again in Term 4 each year. During those weeks, we play host to around 60 female teams, from around 25 different schools across Adelaide. This amounts to around 550 students each week competing across 5 different field spaces and 5 different time slots on Saturday Mornings.

The ages of our participants range from 12 years old to around 18 years old (Yr 7 to Yr 12 students) with a range of skill level and ability.

We are strong supporters of Touch Football SA and have built up a solid relationship with them over the past few years, which has allowed us to continually grow the sport and offer more female students the opportunity to be active in a safe and welcoming environment. The use of Park 17 has been pivotal in our success of this sport, and we would like to see this relationship and use of these fields continue well into the future.

Regards,

Laura Gilbert

SACSSGSA Executive Officer



South Australian Catholic Primary Schools Sports Association

Email: sacpssa@smdps.catholic.edu.au

Mobile: 0419 815 956

To whom It may concern.

Each year, the SA Catholic Primary Schools' Sports Association (SACPSSA) conducts a four-day Touch Football Carnival program on the Park 17 parklands, working in collaboration with Touch Football SA.

Last year is a good guide to the level of participation enabled by our four-day carnival program.

In 2023, 44 schools participated, involving 341 teams (averaging around 85 per day) and around 2,500 students, ranging in age from Year 3 – Year 6.

The area (including some further parkland playing space to the west of the TFSA fields) is divided up into over 20 modified playing fields each carnival day.

SACPSSA is grateful for the long-standing professional partnership it enjoys with Touch Football SA and appreciates the use of the grounds and facilities at the existing home of TFSA, on Park 17.

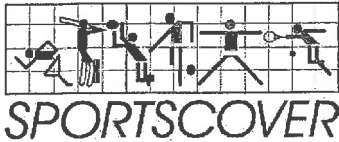
With kind regards,

Darren Elliott
Darren Elliott
Executive Officer
SACPSSA

Proudly Sponsored By



An association encouraging participation and excellence in a variety of sports



Certificate of Insurance Currency

Sportscover Australia Pty Ltd

This certificate confirms that the under-mentioned policy is effective in accordance with the details shown:

Insured Name: TOUCH FOOTBALL AUSTRALIA LIMITED

Club / Association: Touch Football South Australia

Cover: Public Liability: \$20,000,000 any one occurrence
Products Liability: \$20,000,000 any one occurrence and in the aggregate
Professional Indemnity: \$5,000,000 any one claim and in the aggregate
Management Liability: \$5,000,000 any one claim and in the aggregate
(For The Business of Touch Football as more clearly defined in the Policy Wording only)

The Business: Touch Football

Excess: As per policy schedule.

Period of Insurance: 30/06/2023 to 30/06/2024

Underwriter: Sportscover Australia under an authority from Certain Underwriters at Lloyd's

Policy Number: PMEL99/0097606

Counterparty: Adelaide City Council

For full terms, conditions and exclusions please refer to Your Policy Wording version
Combined_Liability_Policy_Wording_07.21

Manager:



Date: 04 July 2023



Expression of Interest - Park Lands Community Facilities

Section 1: Organisation Details	
Organisation/Club Name	South Australian Amateur Soccer League
Type of organisation (Tick multiple boxes if required)	Not for Profit Organisation
Where is your organisation?	Not currently based or active in the city
Postal address	
Unit	
Street number	
Street name	
Suburb	
Postcode	
Contact Details - Primary Contact Person	
Title	Mr
First name	D'Arcy
Surname	Evans
Position title	Chief Executive Officer
Mobile number	0401105407
Email	executive.officer@saasl.com.au
Public Liability Insurance	Yes
Copy of Public Liability Insurance Certificate	COC- FFA NATIONAL PROGRAM - 2022 - Noted Club - South Australian Amateur Soccer League Inc.pdf

Section 2: Activity and Participant Details	
Sport or Activity	The South Australian Soccer Leage is the Governing Body for Amateur Leage Soccer in South Australia having 81 member clubs plating in its competition
Level of competition	We are the largest Amateur League competition in South Australia
What competition/league do you participate in?	N/A
What demand is there for your sport/activity within Adelaide?	Soccer is a forever growing sport and we have seen even further growth from the recent success of the Australian Women's Soccer team - the Matilda's
Team type (Tick multiple boxes as required)	Senior
Junior teams - number of male participants	
Junior teams - number of female participants	
Senior teams - number of male participants	4,500
Senior teams - number of female participants	0
Total number of participants	4500
Number of male teams	239
Number of female teams	0
Total number of teams	239
Will your activity cater for city residents or people from underrepresented population groups?	Yes

As you ticked 'yes' to the above, please provide details	Although I could not mention this above, our aim is to start a Womens competition and also affiliate with Elizabeth District Junior Soccer Association and North Westy Junior Soccer Association for Juniors. As our Competiton is very Multicultural with many teams made of different Nationalities, many migrants and refugees join clubs associated with their country of birth
Section 3: Facility Requirements (Matches/Training/Races)	
Day of the week	Every night of the week (training) and Saturday and Sundays for match games
Season – (Winter, Summer, or full year) and please provide provisional start and end dates	Winter - full year
Start time (AM/PM)	week nights 5.30pm Weekends 9.00am
Finish time (AM/PM)	week nights 9.00pm Weekends 6.00pm
Which teams will be using the facility for each session and how will you be using it?	Senior men's teams and when we get a women's competition up and running, women's senior teams
Section 4: Comments	
Additional Comments	<p>1. The South Australian Amateur Soccer League Inc (SAASL) and its affiliate clubs and community partners sees a rare opportunity to transform Carriagewat Park (park 17) into a vibrant community hub that caters for organised sport, active recreation and community capacity building programs and opportunities.</p> <p>As a long term valuable and desirable tenant and lease holder at the Grange Recreation Reserve the SAASL is looking for active open space and support facilities to continue to expand and develop its community sport programs and events.</p> <p>The SAASL has a strong track record of working collaboratively with the City of Charles Sturt (CoCS) and other sporting and community</p>

	<p>associations such as the Grange Cricket Club and Grange Hockey Club to deliver community sport to the local community and broader South Australia, whilst maintaining high quality facilities and support infrastructure. They would continue to provide and develop these services from an expanded facility offering at Pennington and also encourage other sports and community activities to utilise the spaces also, specifically the Grange Cricket Club, NWJSA and the affiliated clubs of the SAASL including the local Vietnamese based soccer club the Westwood Football Club</p> <p>2. The Vision, Mission and Values of SAASL reflects the inclusive approach:</p> <p>Vision To be the competition of choice for amateur football in South Australia</p> <p>Mission To provide opportunities for community clubs and volunteers to engage in an environment which is respectful, inclusive and equitable.</p> <p>Values</p> <ul style="list-style-type: none"> • Recognising players of all backgrounds and nationalities and providing an inclusive space to play and enjoy soccer • Providing an affordable and accessible competition that everyone can be part of • Representing many communities throughout South Australia
Section 5: Declaration	
First Name	D'Arcy
Surname	Evans
Signature	Link to signature

Expression of Interest - Park Lands Community Facilities

Section 1: Organisation Details	
Organisation/Club Name	City of Adelaide Lions Club
Type of organisation (Tick multiple boxes if required)	Not for Profit Organisation
Where is your organisation?	Based in the city
Postal address	
Unit	[REDACTED]
Street number	[REDACTED]
Street name	[REDACTED]
Suburb	[REDACTED]
Postcode	[REDACTED]
Contact Details - Primary Contact Person	
Title	Mr
First name	Raymond
Surname	Najar
Position title	Club President / 1st Vice District Governor
Mobile number	[REDACTED]
Email	[REDACTED]
Public Liability Insurance	Yes
Copy of Public Liability Insurance Certificate	Lions Public Liability Insurance.pdf
Section 2: Activity and Participant Details	
Sport or Activity	Cricket, Soccer, Football, Tennis Health and Well being Multiple club involvement , Walking, Yoga General exercise training.

Level of competition	National Nepalese Cricket Association Interclub / District, sports activities.
What competition/league do you participate in?	National Nepalese Cricket Association
What demand is there for your sport/activity within Adelaide?	7 Cricket Teams Currently - 3 Juniors and 4 adult in Adelaide, plus interstate and Overseas Competition under the Oceania Banner. Lions have 20 active clubs with the Adelaide Metropolitan region and have approx 550 members year in year out
Team type (Tick multiple boxes as required)	Junior Senior
Junior teams - number of male participants	42
Junior teams - number of female participants	5
Senior teams - number of male participants	85
Senior teams - number of female participants	15
Total number of participants	147
Number of male teams	2- U13 ; 1- U16; 4 Adult
Number of female teams	Currently Combined
Total number of teams	7
Will your activity cater for city residents or people from underrepresented population groups?	Yes
As you ticked 'yes' to the above, please provide details	the Nepalese Cricket Association currently conduct Sunday events from October thru to March, without any discrimination of race or colour and in conjunction with all Lions Club code of Ethics and Purposes. Diversity does not Discriminate. Lions membership consists of all races, First Nations and genders'.
Section 3: Facility Requirements (Matches/Training/Races)	

Day of the week	Predominately Weekends But access to storage and Club meetings will require monthly evening meetings.
Season – (Winter, Summer, or full year) and please provide provisional start and end dates	Lions activities Full Year, Nepalese Cricket Association October to March
Start time (AM/PM)	9.00am
Finish time (AM/PM)	4.00pm
Which teams will be using the facility for each session and how will you be using it?	1
Section 4: Comments	
Additional Comments	<p>The City of Adelaide Lions Club, wish to establish itself as a convenor of public sports activity, and general health and well being that aligns with our "Fight Diabetes"; MND and other social needs activities and in conjunction with the National Nepalese Cricket Association.</p> <p>We wish to establish a Lions Leo sports Club in partnership with the Pulteney Grammar School and align our activities with all schools and clubs that currently use Park 20 for all of their various activities and sporting competitions.</p> <p>The City of Adelaide is able to blend into the facilities where it is deemed appropriate and utilize those facilities on a shared basis and fund upgrades as and when it is deemed appropriate and necessary.</p> <p>As the Premier Service Club in Adelaide it is our duty to co-operate and serve the public as is required by the requests of the many sectors of society .</p>
Section 5: Declaration	
First Name	Raymond
Surname	Najar
Signature	Link to signature



Adelaide Nepalese Cricket Association

Email: nepalesecricketclub@hotmail.com

TO WHOM IT MAY CONCERN

This is to confirm that we Adelaide Nepalese Cricket Association "ANCA" supports the LIONS CLUB to lease Blue Gum Park/Kurangga (Park 20) – Sports Fields, courts, club rooms + storage facilities.

Park 20 perfectly lines up with our needs to keep on serving Cricket within the wider community. We currently have below teams playing under us

- 7 Men's Clubs (140+ Men's players)
- ANCA SUNSHINE (42+ Women's players)
- ANCA GEMS U14 (20+ Gem's players)
- ANCA GEMS U12 (20+ Gem's players)
- ANCA GEMS U10 (20+ Gem's players)

Above ANCA Teams play on Sundays (1:30pm onwards) and practice on Friday afternoons (5:00pm onwards) and we have requirements of 4 ovals, club room to executive our programs. Our Season starts in September and ends in March each year.

Below are some details on ANCA for your information

ADELAIDE NEPALESE CRICKET ASSOCIATION (ANCA) was formally established in 2014. The main aim of ANCA is to serve the wider community with the power of CRICKET. We are working on basic two below objective to achieve our aim

- Making cricket sports for ALL
- Giving back to community

Simply each program developed is based on above two objectives

Below are some highlights of the program

- Annual blood donation program in month of September since 2016 every year in partnership with Australian Red Cross – initiation to give back to the wider community
- Annually Collecting donation for McGrath Foundation (doing magnificent work on breast Cancer) and have been declaring our Anniversary Day as "PINK STUMPS DAY" in support of the foundation
- Annual Cricket clinic for People with Disability
- Providing platform to international students by welcoming everyone in the community and helps them feel that they are part of a family. Also active in linking international students with potential job opportunities with local business. This helps international students to understand working culture here in Australia and allows them to better integrate to the wider Australian Community.
- Encourage women to be part of the sports which will help to keep physically and mentally fitness. We heavily invested in time and resources to drive to form the ANCA

"TEAMWORK MAKES THE DREAM WORK"



Adelaide Nepalese Cricket Association

Email: nepalesecricketclub@hotmail.com

SUNSHINE in 2018. This was equally supported by South Australian Cricket Association (SACA). The team is going very strong hand in hand with the men's team.

- We have been organising ANCA SUNSHINE DAY since 2021 focused to empower women through sports – our main motivational speak is our Advisor Katrina Webb OAM along with other respected speakers
- Running kids program WOOLWORTHS CRICKET BLAST since 2015
- Running MULTICULTURAL BEACH CRICKET Blast. The program is popular and gone strength to strength with other kids' program
- Heavily investing on ANCA GEMS, our Junior under 10,12 & U14 team – ANCA GEMS U10 & U12 playing on WSJCA league
- Organising ANCA SUPER LEAGUE each season which runs from October to March – This year we have 7 Nepalese Cricket clubs playing the tournament. SACA umpires run the matches. The main aim of ANCA SUPER LEAGUE is to identify the talents and provide pathway to SACA Premier Cricket
- Selecting, training and grooming ANCA KINGS, our Men's Team who plays high level local games and interstate games
- We have been organising ANCA Six a side tournament purely focuses on corporates since 2015. The main aim of the tournament to let corporates enjoy a fun full day with cricket and more importantly encourage business to give back to the community
- We organised first ever Cricket only interstate tournament AUS NEPAL CUP in March 2019 – it was huge success with 5 states participating. We were highly praised for the quality organisation and facility provided.
- We hosted previous Nepal National Cricket team Captain Paras Khadka in Jan 2019 in conjunction with EEVS. The comments from the captain himself was "Adelaide program was best among all others"
- We hosted Current Nepal National Cricket team member Khusal Bhurtel on Dec 2023 at SACA Committee room with help of SACA
- Beside ANCA League, we have been participating in SACA men's tournament like Friendship Cup, Super Cricket, SAMCA Cup
- We are SAMCA 2022 Champion
- We are Oceania Nepalese Sports meet 2023 Champion held in Canberra
- Besides ANCA League, we have been participating in SACA Women's tournament like Super Cricket with multicultural community
- As we understand the quality – we have our own dedicated Child Safety Officer, First Aid officers, OHS officers, Spirit of Cricket officers for each men's, women's and Junior teams

In recognition in works done, below are the awards presented till date

- ANCA was WINNER in Cricket Australia Award for JUNIOR CRICKET INITIATIVE OF THE YEAR 2020/21

“TEAMWORK MAKES THE DREAM WORK”



Adelaide Nepalese Cricket Association

Email: nepalesecricketclub@hotmail.com

ANCA fully understands the importance of technology and social media.
All the scoring of Men's, Women's and Junior game is done on PLAYHQ, maintained by the Cricket Australia.

Our Facebook page regularly updates on the program and games - we have 2600 + followers and our post get excellent views
[ANCA Adelaide Nepalese Cricket Association | Adelaide SA | Facebook](#)

We also do LIVE streaming using professional of our selected games – this is done with the help of our media partners

Please don't hesitate to contact us if you need any further information

Sincerely Yours'

Bijaya Joshi
President
ANCA

“TEAMWORK MAKES THE DREAM WORK”



Adelaide Nepalese Cricket Association

Email: nepalesecricketclub@hotmail.com

- ANCA was WINNER in South Australian Cricket Association Cricket Award for JUNIOR CRICKET INIATIVE OF THE YEAR 2020/21
- ANCA was finalist in South Australian Cricket Association Cricket Award for INCLUSION & DIVERSITY INIATIVE OF THE YEAR 2019/20 and received a recognition letter from SACA.
- ANCA was finalist in South Australian Cricket Association Cricket Award for CRICKET ASSOCIATION OF THE YEAR 2018/19 and received a recognition letter from SACA.
- ANCA was finalist in South Australian Cricket Association Cricket Award for CRICKET ASSOCIATION OF THE YEAR 2023/24 and received a recognition letter from SACA.

ANCA was established in 2014 with just 14 men's members and there wasn't any Nepalese Cricket club in Adelaide

Now with ANCA's direction, we are family of 400+ members and have below Clubs /Teams

- Fully operating 7 Nepalese Cricket Clubs with one Men's team each. ANCA runs ANCA SUPER LEAGUE for full season starting from October to March each season. The Tournament is organised with high quality played every Sunday at Victoria Park Ovals run by SACA umpires
- ANCA KINGS - ANCA main team selected from ANCA SUPPER League
- ANCA SUNSHINE - Women's Team
- ANCA GEMS U10, U12 & U14- Junior Teams
- WOOLWORTHS CRICKET BLAST

ANCA fully supported in club formation and help to develop respective club committee and their respective clubs. ANCA also helped club with Sponsorship as we fully understand the importance to be financially sound for the successful club

ANCA heavily investing in ANCA SUNSHINE and ANCA GEMS. Each program and including playing uniform made available free of cost. We are proud that we have 35 ANCA SUNSHINE members and 102 ANCA GEMS members

The main aim of ANCA SUPER LEAGUE is to identify the talents and provide pathway to SACA Premier Cricket - We currently have around 15 playing in SACA Premier cricket

The main aim of ANCA SUNSHINE is to identify the talents and provide pathway to SACA Premier Cricket

The main aim of ANCA GEMS is to identify the talents and provide pathway to district cricket - We currently have 10 players from our ANCA GEMS U12 & U14 playing in district cricket

“TEAMWORK MAKES THE DREAM WORK”

Expression of Interest - Park Lands Community Facilities

Section 1: Organisation Details	
Organisation/Club Name	North West Junior Soccer Association Incorporated
Type of organisation (Tick multiple boxes if required)	Not for Profit Organisation
Where is your organisation?	Not currently based or active in the city
Postal address	
Unit	Nil
Street number	PO Box 2387
Street name	Nil
Suburb	Port Adelaide
Postcode	5015
Contact Details - Primary Contact Person	
Title	Mrs
First name	Sarah
Surname	Larizza
Position title	Administration Officer
Mobile number	0422832562
Email	info@nwjsa.org.au
Public Liability Insurance	Yes
Copy of Public Liability Insurance Certificate	PSCSYD 20240301 Invoice - NTHWESTJ - 146808.pdf_extract.pdf
Section 2: Activity and Participant Details	
Sport or Activity	Junior football (soccer) for primary school aged children
Level of competition	School and community level - entry level and low cost
What competition/league do you participate in?	We conduct our own competition with currently 40 primary schools participating

<p>What demand is there for your sport/activity within Adelaide?</p>	<p>North West JSA has 40 Primary schools fielding teams in 2024 their locations range from Paringa Park Primary – Glenelg – Outskirts of the CBD (North Adelaide, Nailsworth, Prospect, Rosary) through the western suburbs out to Outer Harbour/Lefevre Peninsula.</p> <p>On a weekly basis (excluding the Carnival) 160 matches are played between Jubilee Reserve, West Lakes Shore and St Clair Oval, Woodville. In 2023 the Association was able to organise 2240 games across 14 rounds of the season, with the 15th round being Carnival Day for U6 to Seniors, held on 16th September 2023 with 320 games played over three venues, Jubilee Reserve, West Lakes Shore Primary School Oval and SMOSH Football Oval, West Lakes.</p> <p>2023 was a major growth year for NWJSA, we had an extra 60 teams nominate to play this season from our existing member schools, in total 325 teams, that equates to 3040 players and this is our highest number of registered players in a season. This year we have 3320 registered players.</p>
<p>Team type (Tick multiple boxes as required)</p>	<p>Junior</p>
<p>Junior teams - number of male participants</p>	<p>2,629</p>
<p>Junior teams - number of female participants</p>	<p>700</p>
<p>Senior teams - number of male participants</p>	
<p>Senior teams - number of female participants</p>	
<p>Total number of participants</p>	<p>3329</p>
<p>Number of male teams</p>	<p>U6 82 teams, U7 63 teams, U8 57 teams, U9 49 teams, U10 36 teams, U11 25 teams, Senior Primary U13s 28 teams = 340 total teams note these are mixed gender teams</p>
<p>Number of female teams</p>	<p>U6 8 teams girls only</p>

Total number of teams	348
Will your activity cater for city residents or people from underrepresented population groups?	Yes
As you ticked 'yes' to the above, please provide details	Girls, people with a disability, newly arrived migrants and refugees, Aboriginal and Torres Strait Islanders, people on low incomes and children with autism and ADHD, down syndrome
Section 3: Facility Requirements (Matches/Training/Races)	
Day of the week	Monday evenings and Saturdays
Season – (Winter, Summer, or full year) and please provide provisional start and end dates	Winter 1 May to 30 September
Start time (AM/PM)	Monday 6pm, Saturday 7am
Finish time (AM/PM)	Monday 8pm, Saturday 3pm
Which teams will be using the facility for each session and how will you be using it?	Junior boys and girls matches on a Saturday and training on a Monday evening. The NWJSA hosts an annual carnival in September each year.
Section 4: Comments	
Additional Comments	<p>The NWJSA was formed in 1973 and provides junior and entry level football competitions for primary school aged children. The NWJSA motto is Inclusive, Fun and Participation. Cost to play is only \$40 per participant per season which includes a \$5 insurance fee.</p> <p>The usage will be for matches primarily and some limited training as the school based teams mainly train at their local venues/schools. The competition is spread currently over two venues and ideally would be centrally based at one venue. There are many schools that currently do not compete that would if more space was to become available. The NWJSA has a strong working relationship with the South Australian</p>

	<p>Amateur Soccer League and is a member of Sport SA.</p> <p>Financially the NMWJSA is in a strong position with a turnover of \$260,919 in 2022/23 financial year and expenses of \$205,832.29 generating a net profit of \$55,087. The NWJSA has substantial assets of \$305,440 in cash at the end of the 2022/23 financial year.</p> <p>The NWJSA has experience managing facilities having leased Jubilee Park and St Clair Oval from the Charles Sturt Council and associated buildings and other similar sites for over 50 years.</p> <p>We would be keen to develop it in the future in conjunction with Council as an inclusive community hub facility with, universal changerooms, storage areas, meeting space and canteen.</p>
Section 5: Declaration	
First Name	Sarah
Surname	Larizza
Signature	Link to signature



14 June 2024

Attn: Mr Jamie Stefanato
Expression of Interest
Kurangga (Park 20)
Submitted via email: yoursay@cityofadelaide.com.au

Dear Jamie

RE: Pulteney Grammar School submission – Expression of Interest for Community Lease Renewal for Kurangga (Park 20)

We write in reference to the above Expression of Interest (EOI) released 20 May 2024. We enclose our submission for Pulteney Grammar School's (Pulteney) continuing use of Kurangga (Park 20).

Should you have any queries regarding our application or should you require any additional information, please do not hesitate to contact us.

We look forward to further discussions with you regarding our continued stewardship of Kurangga Park 20.

Yours sincerely

Nick Miller
Business Director

Planning Context

Kurangga forms part of the land formally described as the following parcels as part of a whole of land;

- Lot 6020 Peacock Road
- Lot 6020 South Terrace
- Lot 6020 Greenhill Road
- Lot 6020 Unley Road

These parcels are contained within Crown Record 6102, Folio 717.

The entirety of Park 20 encompasses over 290,000 square metres with frontages to South Terrace (518 metres), Unley Road (571 metres), Greenhill Road (531 metres) and Peacock Road (571 metres). The area of the park that EOI focuses on is the upper northern portion of the site, adjacent Pulteney Grammar at 190 South Terrace.

The land is owned by the Crown, with Pulteney having been the responsible stewards of the land for over 100 years with the head lease over the site.

Kurangga is located within the Adelaide Park Lands, a nationally heritage listed area that surrounds the Adelaide CBD. Park 20 also contains the local heritage listed Glover Playground Pavilion

The park contains the following structures;

- Clubrooms (98 square metres)
- Machine shed (74 square metres)
- Old Scholars clubrooms (170 square metres)
- Tennis shed (40 square metres)
- Horticultural storage (18 square metres)

Zoning

As per the Planning and Design Code (2024.9, gazetted 23 May 2024), Park 20 is located within the Adelaide Park Lands Zone which encompasses the following desired outcomes;

A unique publicly accessible and well-connected open space system, including the formal city squares, that creates a distinctive landscaped park setting for the City of Adelaide.

A range of passive and active recreational activities with a high-level of amenity, including a safe and connected walking and cycling network, natural areas, sporting fields and club facilities, formal cultural gardens, public artwork and passive recreation areas, as well as opportunities to support a variety of temporary events, such as festivals, concerts and sporting events.

The current use of Kurangga closely aligns with these desired outcomes, with the Park used in many varied capacities for recreational and sporting activities. This varied use positively contributes to the context of the area, with the park used by both male and female participants as well as a wide range of ages and ethnicities.

Pulteney has been custodians of the land since approximately 1917. Having recently celebrated its 177-year anniversary, Pulteney has been at its current location at 190 South Terrace for over 100 years, during which time it has been the responsible custodians of Park 20.

During this time, the School has evolved from an all-boys school of 263 students in 1921 to a coeducational school since 1999 with a current enrolment of 967 students with 422 female and 545 male students.

Context

Kurangga (Park 20) is part of the south-eastern park lands which occupy the area between Peacock Road and Hutt Street and is one of three parks – Kurangga (Park 20), Pityarilla (Park 19) and Wita Wirra (Park 18).

Approximately half of the land area of Park 20 is managed by Pulteney with the remainder of the area utilised by Adelaide Harriers Club, Tree Climb, Pétanque Piste, Community City Dirt Jumps (BMX) and various tennis and other sporting licences as shown in the following **Figure 1**.



Figure 1: Kurangga (Park 20)

Source: City of Adelaide Community Land Management Plan for the Adelaide Parklands, 2023

Pulteney has been the responsible custodians of Kurangga (Park 20) for over a century. During that period, we have seen the Park change and evolve as usage needs and volumes have changed. **Figure 2** shows the current licences held by Pulteney.

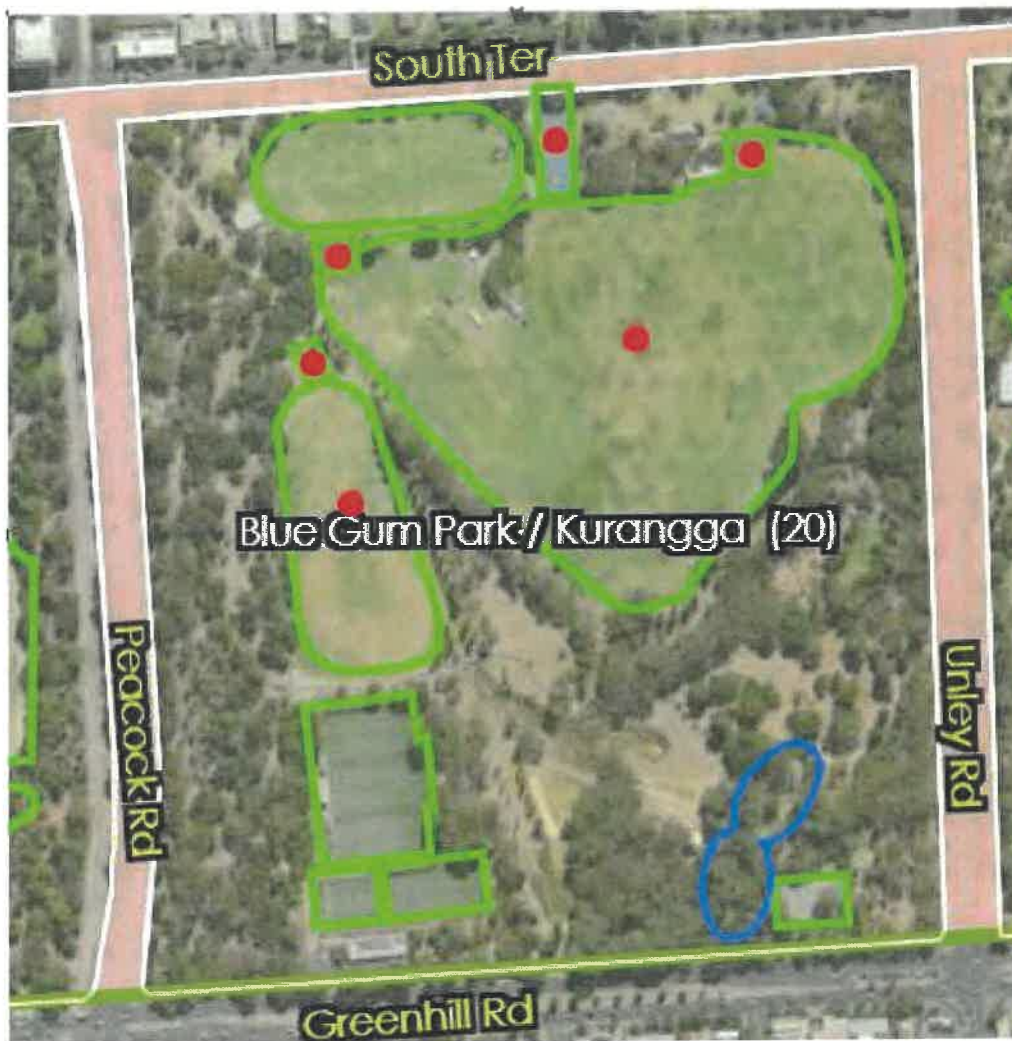


Figure 2: Kurangga (Park 20), showing licences held by Pulteney (in red)

Source: City of Adelaide Community Land Management Plan for the Adelaide Parklands, 2023

Whilst Pulteney holds the head lease over Park 20, the School is responsible for establishing Community Use Agreements (CUA) with companies and individuals who wish to use the Park. These are then approved by the Council via the Park Lands Sport and Recreation subletting site.

The continuing use of Park 20 for Pulteney is an absolute necessity, in terms of accessibility of the space for students use for education, fitness, sport and recreation and community gathering.

We have demonstrated an effective and comprehensive community spirit in our encouragement and management of the community use of Park 20 over the last century and we believe that we have set an exceptional standard for the next century.

Our submission closely aligns with the Council’s South-East Park Precinct Drivers of Change Statement;

“As the pre-eminent sport and recreation precinct in the Park Lands, improvements to playing fields, courts and sports infrastructure will fuel the community’s capacity to participate in a wide range of physical activities with positive health and well-being outcomes”.

This is effectively "business as usual" for Pulteney. We intend to continue our stewardship of Park 20 in its current form, with the benefit of improved facilities once we have agreed upon the parameters with Council and other community users.

Introduction

Pulteney Grammar School has recently celebrated 177 years within the City of Adelaide with over 100 years at the current site across from Kurangga, Park 20. The School is an important, integrated and embedded member of the City of Adelaide. It is both a custodian and partner of the Council in providing services to the park lands and we believe that as a benefactor, the use of the park lands is a privilege.

We believe that our values echo those of the park lands:

Authentic: Honesty, truth, integrity

Purposeful: Intentional, resolute and reflective

Personalised: Curated and distinctive experiences

Boundless: Limitless opportunities sought through passionate thought and deed

Enduring: Legacy etched through a community's tradition, innovation, service and faith

Relationships: Respect and empathy fostered through collaboration and care

Assessment Criteria

Community Benefit (40%)

- a. The application is for community level sport.

The application is for the continued use of Park 20 for a number of different community sport associations with the park being used formally for soccer, football and cricket as well as informally for a number of other sporting endeavours. A full breakdown is provided as part of **Section 3**. This shows that the Park is utilised by school children from Pulteney and surrounding schools, old scholars of Pulteney, adults and the broader city community for the purposes of community level sport. **Figures 3 and 4** show community sport being played at Park 20 with Century Cricket League and Aish Academy football:



Figure 3: Century Cricket League at Kurangga
Source: Pulteney Grammar



Figure 4: Aish Academy's Warhurst Shield Match
Source: Pulteney

The State Government's Office for Recreations, Sport and Racing department's Strategic Plan 2021-2025 prioritises the activation of;

coastlines, parklands and other public spaces to encourage more movement and play.

We believe that through the continued use of Park 20 for community level sport that the Park is effectively activated with sports players, spectators, umpires and children able to use the park lands in a collaborative and inclusive manner.

b. The proposed use will benefit more than one user group.

Current usage of Park 20 allows for a wide range of users to utilise outside of designated times, meaning that both through formal and informal means, the park is utilised all year round by multiple user groups.

In addition to the formal use of the Park, the activities enjoyed in Park 20 are wide and diverse. However, due to the nature of these informal users, we are unable to provide accurate data in relation to hours or times of use. Outside of the licenced times of use, Park 20 attracts a number of different users including;

- Howard and Sons – fireworks display for a memorial service for Clancy Shepherd
- St Martin's Catholic School Out of School Hours Care
- Mawson Lakes Cricket Club
- National Pharmacies Christmas Pageant

- South Australian Veterans Cricket Association
- Glenunga Cricket
- Little Athletics
- Running Clubs
- St Alphonsa Syro Malabar Parish Adelaide Central – Indian Procession
- Kung Fu workshops
- Indian cricket groups playing social cricket on Sundays.



Figure 5: Kung Fu lesson in Park 20
 Source: Pulteney Grammar

As the main licence holder of Park 20, Pulteney actively encourages use of the Park by the community. Our view is aligned with that outlined in the Council’s Active City Strategy, specifically in Local Context, Adelaide Park Lands Management Strategy, which talks to the identification and use of picnic and sports facilities;

Identification of youth activity hubs, including a youth and family space in the north east Park Lands (Kangattilla (Park 4) with off-road bicycle tracks, jumps etc; picnic and community sports facilities (similar to Kurangga Park 20)

This is also shown in Strategy 1.7 which advocates for the optimisation of the use of sport and recreation areas outside game and training times;

"Outside organised game and training times, the sports fields and courts within the Park Lands are a fantastic asset for the community to use and enjoy, providing the

"backyards" for residents living in and around the City. Whether it be having a picnic, kicking the footy, flying a kite, doing tai chi or walking the dog, the opportunities to use these areas are limited only by imagination."

The diversity of use of Kurangga is further reinforced by Pulteney's hosting of the preparations for Adelaide's annual Christmas Pageant. The Christmas Pageant has been running in Adelaide since 1933 and has grown to be one of the largest pageants of its kind in the world. Pulteney has been a key supporter, hosting the final preparations of costuming, make-up and temporary storage of the smaller floats the night prior since 1953.



Figure 6: National Pharmacies Christmas Pageant 2023

Source: Pulteney

During its century of stewardship of Park 20, Pulteney has promoted and encouraged unrestricted community access to sports fields and recreation areas outside of designated game and training times, while ensuring there is a reasonable definition of required ground maintenance and rest periods as per action point 1 of strategy 1.7.

The other action points outlined in Strategy 1.7 are;

Provide amenities (shelters, seating, toilets, etc) adjacent to sports fields and recreation areas to encourage and support ongoing use by the general public.

Weave informal recreation through sports areas to create rich multi-functional, social and community spaces.

Pulteney have been working closely with various staff within Council to assist in delivering these action points. We would note that the limitations of the current facilities on Park 20 are, however, a barrier to effective delivery of these priorities. The main concern being the lack of adequate change room facilities for women as well as the lack of updated facilities for males.

While we have so far concentrated on sporting and recreational use of Park 20, the varied use of the Park from a curriculum perspective must also be highlighted. As identified above, Pulteney is a co-educational school from Early Learning Centre (ELC) to Year 12, encompassing an age range from 3 to 18 years old. Access to Park 20 has enabled Pulteney to develop and embed a range of activities linked with the Park Lands in the daily experiences of our students. For example, awareness of the importance of our environment and the role we play in its protection and survival are a direct result of the student use of all parts of Park 20.

Both the ELC, junior and senior schools use Park 20 as part of their education and it is an invaluable environment for teaching and learning, this can be shown in the below **Figure 7** showing the 'Bush Kindy' that younger students participate in as well as the use of the grounds for sports days as shown in **Figures 8 and 9**;



Figure 7: Bush Kindy at Kurangga
Source: Pulteney



Figure 8: Junior School Sports Day at Park 20
Source: *Pulteney Grammar*



Figure 9: Senior School Sports Day at Park 20
Source: *Pulteney*

Further to this, we recognise that the Adelaide Park Lands form part of the Red Kangaroo Dreaming place, an important place for the Kurna people long before Adelaide was established. Park 20 is known as Kurangga which loosely translates as "blue gum place".

One of Pulteney's renowned old scholars is Harold Thomas, who was the School's first Aboriginal student and the designer of the Australian Aboriginal Flag.

Over the last decade, Pulteney and the Kurna people have built a mutually beneficial relationship and harmonious use of the grounds and facilities contained within Kurangga. The shared use of Park 20 has ensured a deeper connection with our indigenous heritage, nature, a stronger awareness of our impact on the environment and a deep respect for our shared care for the park.

We recognise the importance of connection to the land. Pulteney students and staff work closely with the traditional owners of the land on a regular basis. Integration of Kurna culture in our learning environment, as well as in our use of Kurangga Park 20, is an ongoing and important part of Pulteney's recognition of the Kurna people's connection to the land.

This connection was further strengthened in 2016, when Kurna elder Jack Buckskin presented the School with a Kurna shield, crafted from the bark of a tree from Kurangga Park 20. The selection and crafting of such an important symbol was gratefully accepted by Pulteney as shown in the below **Figure 10**;



Figure 10: Karna Shield Tree

Source: Pulteney

- c. There is significant demand for the sport(s).

As demonstrated in **Section 3 and section pertaining to Other Users of Park 20 including once off users**, the utilisation of Park 20 throughout the year for various sports shows there is more than adequate demand for the space. The park is a hub for sports for all age levels, abilities and genders. This is evidenced through the use of the park for Pulteney school children, ages 3-18, different leagues of competition and sport for all genders.

We note that Kurangga has been used at various times for sporting events and training in a non-ongoing basis. During COVID in 2020/2021 when Adelaide Oval was closed, the South Australian Cricket Academy (SACA) contacted Pulteney seeking use of Kurangga for training for the women's SACA program.

Teams involved during this time included;

- Women’s Big Bash League (WBBL)
- The SA Scorpions
- SACA Under 14’s
- SACA Under 16’s
- The Adelaide Strikers; and
- SACA

The usage was as per **Table 1** below;

Thursday 8 October	10.30am – 1.00pm	SA Scorpions	Vaughton nets and oval
Friday 9 October	10.00am – 1.00pm	SA Scorpions	Vaughton nets and oval
Friday 9 October	10:00am - 5:00pm	SACA U14	Harris oval
Monday 12 October	4:30pm - 7:30pm	SACA U16	Hooper oval
Tuesday 13 October	10.00am – 1.00pm	Adelaide Strikers WBBL	Vaughton nets and oval
Tuesday 13 October	4:30pm - 5:30pm	SACA U19	Morgan oval
Tuesday 13 October	5.30pm – 7.30pm	SA Scorpions & SACA U19	Morgan oval and nets (3)
Wednesday 14 October	5.30pm – 7.30pm	SA Scorpions	Morgan oval and nets (3)
Thursday 15 October	9.00am – 11.30am	Adelaide Strikers WBBL	Vaughton nets and oval
Thursday 15 October	1.00pm – 3.00pm	SA Scorpions	Vaughton nets and oval
Thursday 15 October	4:30pm - 7:30pm	SACA U19	Morgan oval and nets (3)
Thursday 15 October	5:00pm - 7:00pm	SACA U14	Harris oval
Friday 16 October	9.30am – 12.30pm	Adelaide Strikers WBBL	Morgan oval and nets (3)
Friday 16 October	4:30pm - 7:30pm	SACA U19	Morgan oval
Monday 19 October	4:30pm - 7:30pm	SACA U16	Hooper oval
Tuesday 20 October	4.30pm – 7.30pm	SA Scorpions & SACA U19	Vaughton oval and nets
Thursday 22 October	4:30pm - 7:30pm	SACA U16	Vaughton oval and nets

Thursday 22 October	5:00pm - 7:00pm	SACA U14	Harris oval
Friday 23 October	4:30pm - 7:30pm	SACA U19	Morgan oval
Monday 26 October	4:30pm - 7:30pm	SACA U16	Hooper oval
Tuesday 27 October	4.30pm – 7.30pm	SA Scorpions & SACA U19	Vaughton oval and nets
Thursday 29 October	4:30pm - 7:30pm	SACA U16	Vaughton oval and nets
Thursday 29 October	5:00pm - 7:00pm	SACA U14	Harris oval
Friday 30 October	4:30pm - 7:30pm	SACA U19	Morgan oval
Monday 2 November	4:30pm - 7:30pm	SACA U16	Hooper oval
Thursday 5 November	4:30pm - 7:30pm	SACA U16	Vaughton oval and nets
Thursday 5 November	5:00pm - 7:00pm	SACA U14	Harris oval
Monday 9 November	4.30pm – 7.30pm	SACA U19	Morgan oval
Tuesday 10 November	4.30pm – 7.30pm	SA Scorpions & SACA U19	Vaughton oval and nets
Thursday 12 November	4:30pm - 7:30pm	SACA U16	Vaughton oval and nets
Thursday 12 November	5:00pm - 7:00pm	SACA U14	Harris oval
Friday 13 November	4:30pm - 7:30pm	SACA U19	Morgan oval

Table 1: Use of Kurangga by SACA Women's Teams during COVID

This table is important for a number of reasons, namely as it shows that Kurangga is a multi-functional space, able to accommodate sporting, recreational and passive activities, but it also shows that the space is capable of catering to female participants.

Female participation in sport, especially cricket, football and soccer has risen in popularity in recent years with the success of the CommBank Matilda's soccer team at the 2023 FIFA Women's World Cup, the continued success of the women's Big Bash League and the AFLW league. As of March 2024, the State Government has made \$2.8 million available as part of the first round of The Power of Her – Infrastructure and Participation Program which is dedicated to female sporting facilities, improvements, programs and projects that grow and enhance female participation. **Figures 11 and 12** show



Figure 11: Girls' First Football at Kurangga
Source: Pulteney



Figure 12: Girls' Anglican Football at Kurangga
Source: Pulteney

Need for Changeroom Upgrades

We acknowledge the ongoing process the Council has for the existing community buildings and we would be looking to partner with Council to achieve the best outcomes for both Pulteney and the broader user community of Park 20. We are conscious of the process for updates to the Adelaide Park Lands Zone and want to work with the Council as part of this to ensure that together we can seek the best possible outcomes for any upgraded facility to meet the needs we have outlined as well as those issues the Council has identified in their draft policy paper (including better adaptive use, working within existing footprints).

A recently established State Government Women in Sport Taskforce is working to raise the profile and participation levels of girls and women in sport and to address the inequality that inhabits girls and women from actively and equally participating in the sport they love. Although there are many, often complex reasons that females do not participate in sport, one is the lack of adequate and private changing rooms spaces separate to males.

The taskforce aims to support women in sport;

The State Government is serious about backing women in sport and will work relentlessly to ensure girls and women can equally and actively participate in the sport they love.

Without adequate improvements to the changeroom facilities in Park 20, the continued use of the park is in jeopardy. Pulteney, as well as key stakeholders, are committed to the self-funding of these areas. We see it not only an activation of the park lands but essential community contribution to the City of Adelaide.

The existing facilities pose a number of risks in terms of females changing without adequate space or privacy. This poses bigger issues in terms of;

- Inclusivity
- The ability to encourage more females to play sports in Park 20
- Existing facility construction is not up to standard and poses risks in terms of safety in construction
- Not meeting AFL minimum standards for needs of umpires and players
- Not meeting the minimum standards for regional football in SA

The lack of adequate facilities is also of concern to the School community as well with use of changerooms now by males and females with no separation for genders or ages

(juniors and seniors). This has been noted as one of the reasons that there is not greater participation of female old scholars in sports at Pulteney.

We have a number of hopes and goals for the updates to the facilities and are aware a better plan with adequate support from Council going forward will allow for better outcomes at Park 20. We would also note that Pulteney is not requesting funding or contribution from the Council for these upgrades and can provide costings and plans on request.

d. Number of participants per session.

As per **Section 3 and** , as a breakdown of participants per session, Park 20 is highly utilised throughout the year, not only through the summer season or school terms. In terms of number of participants that are not participating in organised sport as per sub-leases or short-term hires, it is impossible to provide an accurate number of participants per session. Also, as the park is utilised for a number of non-sporting reasons, such as picnics, social gatherings and passive relaxation.

- e. Whilst not exclusive, the application caters for City residents or People from underrepresented groups (Aboriginal and Torres Strait Islanders, women/girls, people on low incomes, newly arrived migrants and refugees, international students and people with a disabilities).

As mentioned throughout, Kurangga is available for use by members of the public outside all times not pre-booked. This allows the park to be utilised by a wide range of people in the community.

Activation (40%)

The application results in the facilities being used frequently i.e. can demonstrate year-round use by the applicant and its sub-lessees.

Year-round use can be demonstrated and is evidenced through the use of the Park for Summer and Winter sports as well as by the School year round and on an ad hoc basis by residents and visitors to the city.

Various facilities have been upgraded and investment has been ongoing in the football, soccer, cricket and athletics facilities over many years. This allows for year-round use as well as ensuring the playing fields are safely available for sport and the public. This ongoing investment aims to create fit for purpose facilities available year-round.

We would also note that for over 50 years, the School has enjoyed a strong and harmonious relationship with the Adelaide Harriers Athletics Club ("Harriers"). The Harriers are the other main licence holder on sporting fields on Park 20.

The two organisations have built a positive relationship with both using the grounds and facilities contained within Park 20. The shared use of Park 20 by both organisations has ensured year-round utilisation of the Park by Harriers, Pulteney and its sub-lessees.

The activities complement the existing facilities and maximises usage relative to the sports field carrying capacity (and potential capacity).

As per the aim of Strategy 1.4 of the Adelaide Parklands Management Strategy;

Support activation of the Park Lands by upgrading and enhancing buildings and structures responsive to their park setting

The existing buildings in Park 20 are nearing the end of their life cycle and will need to be upgraded. As explained earlier in the document, facilities fit for purpose to encourage female participation in sport are solely lacking. This, coupled with the age and degraded nature of the majority of buildings mean that they are not responsive to the setting being an accessible and inviting area.

We believe that in order to further improve the scope and standard of activation at Park 20, a number of issues would likely need to be addressed in terms of the facilities available and operations that are currently possible.

It would be almost impossible at the moment to attract sporting events/competitions of a regional or state sporting level due to the limited nature of the changeroom facilities that are available. This is a shame given various other parts of the Park Lands have been able to use their higher quality set ups and operations to attract a wider range and higher standard of use, including Park 24/Ellis Park being used as a training facility in 2023 during the Women's Soccer World Cup. As discussed, women's sports are gaining popularity in leaps and bounds and with adequate investment and collaboration between Pulteney, Council and State Government there is a great opportunity to invest in the state and the future of sport in SA.

We believe that an improvement of facilities would have other flow on activation benefits. Most notably would be an improvement of disability access and disability toilets, as well as improved public toilet facilities, which would be a significant step in making the overall area more attractive for sporting/leisure groups, local city residents in making the most of the area and also allowing better overall inclusion for activities in the area. Upgrades such as the one that has occurred at Park 9 have been a good demonstration of this. This is a good parallel to Park 20 as the quality upgrade of both public and disabled toilets at Park 9 has also helped to compliment the adjacent playground.

An upgrade of the community building currently at Park 20 has long been an ambition of Pulteney as it would generate an increase in activation as set out above, but also in terms of drawing more people to the area to watch or be involved in supporting different

sporting groups. The necessary investment that would encourage such activation is something Pulteney would like to provide in the longer-term if encouraged by greater security in terms of a longer-term leasing arrangement, which would underpin Pulteney further deepening the roots of its connection with Park 20 and allowing a greater range of sporting groups, residents and community members to make the most of this amazing part of the Park Lands.

The application caters for a wide variety of participants (e.g. by age, gender, cultural background, ability) and types of activities.

As demonstrated throughout this EOI response, Kurangga is utilised by a wide variety of ages, from those in the ELC, through primary and high school ages as well as adults. Apart from cricket, the existing old scholar and other community level football and soccer groups have both male and female participants. In terms of overall gender usage, we are committed to encouraging more female participation. This can be achieved through an update to the existing facilities to make them fit for purpose to both regional and national levels.

In addition to the use of the sporting fields, Pulteney has been part of the South Parklands Hockey and Tennis Centre consortium for 30 years, since its inception in 1994. For the past 23 years, the School has collaborated with the Adelaide Hockey Club and Tennis Seniors SA in the operational and governance aspects of the Centre. We believe that this demonstrates a track record of working collaboratively and effectively with other partners to provide facilities for multiple and diverse users.

Pulteney would like to engage in a long-term plan with Council that feeds into the facilities but also aims to engage with a broader range of groups, that include others we have not been able to address directly with existing use, such as residents and lower socio-eco groups.

The application does not adversely impact on residents or other users of the park.

Apart from the scheduled times throughout the year that Pulteney and the various sub-lessees utilise the Park, it remains available for community use. We believe that this does not allow for any adverse impacts on residents or other users of the Park.

Management/Governance/Risk (20%)

Pulteney has been managing Park 20 for over 100 years. During this time, we have shown that through our excellent track record of management, that Park 20 has flourished into a space used by a wide range of the community. Given the current independent management of the Park by Pulteney as part of the current lease arrangement, the management and operation of the Park is undertaken by Pulteney, which includes the subsequent assumption of risk.

In terms of management of the Park, we are currently responsible for the following;

- The independent operation and management of the Park and associated facilities; including risk management
- The ongoing maintenance of the buildings
- Investment of significant capital in the development of facilities and services provided, and
- The ongoing maintenance, security and cleaning of the Park.

It would be our preference to retain a longer term lease over Kurangga as it would allow the School and other stakeholders a better consideration for further capital investment into the facility.

We have attached operating expenses for the Park at **Appendix B**, this shows that Pulteney is capable guardians of the land with staff employed solely for the purpose of groundskeeping and administration of the site. We would note that not only has Pulteney been responsible for the maintenance, management and administration of the Park, but that we have also been responsible for the continuous improvement of Park 20.

Throughout our stewardship of Kurangga Park 20, our actions have aligned with Strategy 1.6 of the Adelaide Park Lands Management Strategy 2015-2025;

Strengthen the role of the Park Lands as a regional destination for competitive sport and a variety of active and passive forms of recreation.

Key actions identified as necessary to support this strategy include:

Create flexible venues and spaces to accommodate future growth in sport and recreation.

Upgrade playing areas, buildings, viewing areas, exercise equipment and other facilities to support sport and recreation.

Provide sports-specific facilities in designated locations to increase the diversity of sports opportunities available to the community.

Deliver a variety of facilities, including clubrooms and small-scale commercial operations, to support community use and participation in sport and recreation.

Deliver improved playing surfaces (natural and synthetic) and lighting to maximise activation of sports fields and courts.

Support the equitable use of facilities by all groups and the general public.

While these actions have only recently been formalised, at all times in Pulteney's custodianship of Kurangga Park 20, we have acted in accordance with these goals for the park lands.

Through the continuous year-round usage of Kurangga, we believe that we have contributed to the strengthening of the park lands as a regional destination for competitive sport.

Financials

Pulteney is financially reliable and has no outstanding debt or grant acquittals with the Council. We do not have any unresolved breaches of existing leases or licence agreement with the City of Adelaide or another council.

Pulteney is affiliated with a peak or governing body, being the governing board of Pulteney Grammar School.

Pulteney is able to demonstrate substantial experience in the management of existing facilities and surrounds of the Park as we have been custodians of the land for over 100 years. In this time, we have cared for the park, maintained it to a high standard and continued to have a positive relationship both with Council and with those that use the park frequently. Pulteney is pleased to share a collaborative management model with Council as well as high frequency users and short-term users of the space.

Our partnership approach has always been one of genuine relationship building as this is also one of our key values that we share with Council and sub-lessees. These values show that we are accommodating as well as being streamlined and professional.

Pulteney has a comprehensive governance/management model which can be further evidenced by the sound financial management of the park as evidenced in **Appendix B and C**.

Section 1 Organisation Details

1.1	Organisation/Club Name	Pulteney Grammar School Inc
1.2	Type of Organisation	Educational Institution (Independent)
1.3	Is your organisation?	Currently holding a head lease/licence in the Adelaide Park Lands for Kurangga/Park 20
1.4	Postal Address	190 South Terrace, Adelaide SA 5000
1.5	Contact Details Primary Contact Person Secondary Contact Person	Nick Miller Business Director 8216 5555 / 0428 278 641 nick.miller@pulteney.sa.edu.au Andrew Shaw Property and Facilities Manager 8216 5523/ 0498 759 016 andrew.shaw@pulteney.sa.edu.au
1.6	Public Liability Insurance	A current copy of Pulteney's Public Liability Insurance Certificate (\$20 million) is attached at Appendix B

Section 2 Activity and Participation Details

2.1	Sport or Activity	Various sports including football, soccer, cricket and athletics – full details of all uses are provided in Section 3
2.2	Level of Competition	Various levels of competition as well as levels and division – see Section 3 for further details
2.3	What competition/league do you participate in?	Various levels of competition as well as levels and divisions – see Section 3 for further details
2.4	What demand is there for your sport/activity within Adelaide?	We have gone into greater detail in previous sections as to the demonstrated demand for sports in Park 20, but as a whole across SA: <i>Australian Rules Football (AFL)</i> SA has 68,985 registered football players with 367 clubs over 30 competitions <i>Football (Soccer)</i> SA has 56,508 participants throughout the state <i>Cricket</i> SA has approximately 140,000 participants across all leagues and competitions <i>Kurangga also forms part of the outdoor space for the School's Early Learning Centre and for the school based Physical Education for Pulteney</i>

2.5	Participation Information		Junior	Senior
		# of male participants	545	395
		# of female participants	422	76
		Total # of participants	940	471
		# of male teams	N/A as school children use	10
		# of female teams	N/A as school children use	2
		Total # of teams	N/A	12
		Will your activity cater for city residents or people from underrepresented population groups?	See below	

As per the above table, the gender splits between male and female are shown in the section titled **Other Users of Park 20 including once off users**. For the above table we have focussed on the top 3 formal users of the Park, being Pulteney Old Scholars, Pulteney Grammar School and SANFL the overall gender breakdown in 65 per cent male participation and 35 per cent female participation.

In terms of Park 20 and the ability for activities to cater toward city residents or people from underrepresented population groups – we believe that throughout this EOI we have addressed this showing that the Park can cater for a number of varied users. These users play different sports, include different ethnicities and age groups and are able to use the park at any time when it is not prebooked as per Community Use Agreements.

Pulteney would be happy to work with Council to further increase the usage of the Park by underrepresented population groups. We believe that the park lands are a valuable natural resource in the city of Adelaide and encouraging more users will be beneficial to all.

Section 3 Facility Requirements (Matches/Training/Races)

The following tables show a detailed breakdown of the current usage of Kurangga by current users who utilise the Park for over 40 hours per year.

We have also included data relating to once off users including gender and diversity breakdowns.

Pulteney Old Scholars

As the main user of the grounds at Kurangga apart from Pulteney Grammar School, Pulteney Old Scholars utilise the grounds for a number of sports including, soccer, cricket and football.

The total amount of teams fielded equates to 80 per cent male and 20 per cent female representation with ages ranging from 17 to 40 years.

Pulteney Old Scholars - Soccer

Day of the Week	Season	Start time	Finish time	Approximate number of sessions required	Which teams will be using the facility for each session and will it be used for competitions or training
Tuesday (Vaughton)	February – September	6pm	9pm	35	Training – Men’s Collegiate Teams x 2
Tuesday (Vaughton)	February – September	6pm	9pm	35	Training – Women’s Amateur League
Wednesday (Vaughton)	October – January	6pm	9pm	12	Training/Game – Summer League
Wednesday (Vaughton)	February – September	6pm	9pm	35	Training – Men’s Masters League x 2
Thursday (Vaughton)	February – September	6pm	9pm	35	Training – Men’s Collegiate Teams x 2
Thursday (Vaughton)	February – September	6pm	9pm	35	Training – Women’s

					Amateur League
Saturday (Vaughton)	February – September	12pm	5pm	20	Games – Men’s Collegiate Teams x 2
Sunday (Harrier’s)	February – September	9:30am	3pm	20	Game – Women’s Amateur League
Sunday (Harrier’s)	February – September	9:30am	1:30pm	20	Game – Men’s Masters League x 2

Pulteney Old Scholars has 5 soccer teams comprising of 2 men’s collegiate teams, 2 men’s masters league teams and 1 women’s amateur league team, with ages ranging from 17-45. All teams also train in the summer season prior to the regular season.

There are 87 male players and 26 female players for a total of 113 players. This equates to a gender split of 23 per cent female and 77 per cent male, which also includes Greek and Italian representation.

Pulteney Old Scholars – Cricket

Day of the Week	Season	Start time	Finish time	Approximate number of sessions required	Which teams will be using the facility for each session and will it be used for competitions or training
Tuesday (Morgan)	September - March	5:30pm	8pm	29	Training - 4 men’s teams
Thursday (Morgan)	September- March	5:30pm	8pm	29	Training - 4 men’s teams
Saturday (Morgan)	October – March	10am	6:30pm	18	Games – 4 men’s teams

Pulteney Old Scholars has 4 cricket teams comprising 4 men’s amateur teams, there are currently no women’s teams.

There are 70 male players and 0 female players for a total of 70 players with the age range being from 17 – 45 and includes 2 Sri Lankan teams.

Pulteney Old Scholars - Football

Day of the Week	Season	Start time	Finish time	Approximate number of sessions required	Which teams will be using the facility for each session and will it be used for competitions or training
Tuesday (Morgan)	January – March	5pm	8:30pm	12	Training - 2 men's and 1 women's team
Tuesday (Morgan)	April - September	5pm	8:30pm	26	Training – Men's Amateur Teams x 2
Tuesday (Morgan)	April - September	5pm	8:30pm	26	Training – Women's Amateur Team
Thursday (Morgan)	April – September	5pm	8:30pm	26	Training – Men's Amateur Teams x 2
Thursday (Morgan)	April – September	5pm	8:30pm	26	Training – Women's Amateur Team
Thursday (Morgan)	January – March	5pm	8:30pm	12	Training - 2 men's and 1 women's team
Saturday (Morgan)	April – September	10am	6pm	18	Games – Men's Amateur Teams x 2
Saturday (Morgan)	April – September	10am	6pm	18	Games – Women's Amateur Team

The Pulteney Football Club has a strong tradition of success and currently fields two men's teams in the Adelaide Football League and one women's team in the Adelaide Footy League Women's D4 competition.

All teams also train in the summer season prior to the regular season.

There are 58 male players and 30 female players for a total of 88 players. This equates to a gender split of 34 per cent female and 66 per cent male.

Pulteney Grammar School

Day of the Week	Season	Start time	Finish time	Approximate number of sessions required	Which teams will be using the facility for each session and will it be used for competitions or training
Monday	School year	8:40am	3:30pm	40	See below
Tuesday	School year	8.40am	3:30pm	40	See below
Wednesday	School year	8:40am	3:30pm	40	See below
Thursday	School year	8:40am	3:30pm	40	See below
Friday	School year	8:40am	3:30pm	40	See below

The use of the grounds for current students of Pulteney are on a structured basis for physical education and play as opposed to games and training as per the above table. There is an estimated yearly usage of 2,200 hours by children aged 3-18 with the children also using the grounds during recess and lunch times.

Organised games at Kurangga during the school year include;

- Target games
- Golf
- AMP Football
- Basketball
- Soccer
- Striking and fielding
- Team games

SANFL AFL Umpires

Day of the Week	Season	Start time	Finish time	Approximate number of sessions required	Which teams will be using the facility for each session and will it be used for competitions or training
------------------------	---------------	-------------------	--------------------	--	---

Monday	January – September	5pm	7:30pm	35	Training and Education Talent Umpiring Academy 200 participants 180 Male 20 female 14-40years Field umpires Boundary umpires Goal umpires
Wednesday	January – September	5pm	7:30pm	38	Training and Education Talent Umpiring Academy 200 participants 180 Male 20 female 14-40years Field umpires Boundary umpires Goal umpires
Wednesday	November - December	5pm	7:30pm	7	Pre-season training

The South Australian National Football League (SANFL) has a proud history of football in South Australia and is the peak body for AFL in SA. The SANFL has been using the grounds at Pulteney for a number of years to train umpires, both male and female and of differing ages for various competitions. All levels of umpires and genders train at the same time at Park 20, with disciplines of field, goal and boundary learning specific skill training.

The SANFL has been a longstanding partner of Park 20 and have demonstrated their ongoing and financial commitment to the Park by providing financial and in kind support to better support the current facilities.

The gender breakdown shows 180 male and 20 female participants, equating to an 11 per cent share of female participation.

Glenelg Cricket Club

Day of the Week	Season	Start time	Finish time	Approximate number of sessions required	Which teams will be using the facility for each session and will it be used for competitions or training
Tuesday	23/24	5pm	6:45pm	24	Under 14's training, 2 teams
Thursday (week 1)	23/24	5pm	6:45pm	24	Under 16's training, 2 teams
Thursday (week 2)	23/24	5pm	6pm	24	Under 16's training, 2 teams
Thursday (week 2)	23/24	6pm	7:30pm	24	Seniors training, 2 teams
Saturday	23/24	12:30pm	6pm	22	Under 14's game (Competition)

Glenelg Cricket Club have been using Park 20 for a number of years for both training and games. At this time, the club only caters to male players.

St Aloysius

Day of the Week	Season	Start time	Finish time	Approximate number of sessions required	Which teams will be using the facility for each session and will it be used for competitions or training
Monday	June – August	10:15am	2:30pm	12	Training for sports day
Tuesday	June – August	10:15am	2:30pm	12	Training for sports day

Wednesday	June – August	10:15am	2:30pm	12	Training for sports day
Thursday	June – August	10:15am	2:30pm	12	Training for sports day

An all girls school, also located in the Adelaide CBD, St Aloysius uses Kurangga mostly when training for sports day.

Sturt Cricket Club

Day of the Week	Season	Start time	Finish time	Approximate number of sessions required	Which teams will be using the facility for each session and will it be used for competitions or training
Saturday	October – March	1pm	5:30pm	20	Under 14 or under 16 boys
Sunday	March 10 – March 31	1pm	5:30pm	2	Under 14 or under 16 boys

Whilst Sturt Cricket Club also has female membership, only males train at Park 20 currently.

Century Cricket Club

Day of the Week	Season	Start time	Finish time	Approximate number of sessions required	Which teams will be using the facility for each session and will it be used for competitions or training
Monday	December	7am	6pm	1	Yearly cricket competition
Tuesday	December	7am	6pm	1	Yearly cricket competition
Wednesday	December	7am	6pm	1	Yearly cricket competition
Thursday	December	7am	6pm	1	Yearly cricket competition
Friday	December	7am	6pm	1	Yearly cricket competition

Century Cricket Club is based in Queensland and has utilised the grounds at Pulteney for a number of years with great success. They host six franchises, each Franchise has 2 teams, U13, and U15 that play. Currently they have both male and female participants but only utilise the grounds for their male students.

Walkerville Cricket Club

Day of the Week	Season	Start time	Finish time	Approximate number of sessions required	Which teams will be using the facility for each session and will it be used for competitions or training
Saturday	October – March	12:30pm	6pm	24	Games

Walkerville Cricket Club current only use Park 20 for boys' cricket as per the above games.

Aish Academy

Day of the Week	Season	Start time	Finish time	Approximate number of sessions required	Which teams will be using the facility for each session and will it be used for competitions or training
Tuesday	February to April, September to November	6:45am	7:45am	1 per week	Training for boys 13-15
Friday	February to April, September to November	6:45am	7:45am	1 per week	Training for girls 13-15

Aish Academy was established to develop South Australia's best youth footballers. As old scholars of Pulteney, the Aish family chose to use the grounds at Park 20 to continue their association with the School. Aish Academy focusses on youth football and trains both boys and girls.

The gender split is 50/50 between males and females which is an excellent example of gender diversity as well as catering for a youth demographic.

Other Users of Park 20 including once off users

User	Gender	Age Range	Diversity
SACA	100% male	Adult	
Sturt Cricket Club	100% male	15-16 years	
SANFL Umpires	90% male, 10% female	18-30 years	
Sports Association for Adelaide Schools	93% male, 7% female	17-70 years	Greek, Italian, Chinese
Aish Academy	50% male, 50% female	13-15 years	1% Indigenous
POSA Cricket Club	100% male	17-45 years	2 Sri Lankan teams
POSA Football Club	80% male, 20% female	17-40 years	
POSA Soccer Club	75% male, 25% female	17-45 years	Greek, Italian
Glenelg Cricket Club	100% male	15-16 years	
Century Cricket Club	100% male	11-15 years	
Adelaide Christmas Pageant	35% male, 65% female	6-65 years	Multi-cultural float, 6 cultural bands, Indian dancers, cosmopolitan Australia float
SACA Women's Cricket Teams: Adelaide Strikers WBBL SACA Under 14 SACA Under 16 SACA Under 17	0% male, 100% female	12-30 years	
Gilles Street Primary School	64% male, 36% female	5-12 years	1% Indigenous
Pulteney Grammar School	57% male, 43% female	5-17 years	
SACA Girls Pathway Cricket	0% male, 100% female	14-19 years	1% Indigenous

Section 4 Comments

Pulteney Grammar has been the responsible custodian of the land at Kurangga (Park 20) for over 100 years and has strived in this time to be inclusive to the local community and respectful of the traditional owners of the land. We aim to align the existing usage of the site with the needs of both Pulteney students, staff and old scholars as well as the broader community. The continuing use of the Park is an absolute necessity, in terms of accessibility of the space for students' use for education, fitness, sport and recreation and community gathering. We have demonstrated in our long running tenure of the site, an effective and comprehensive community spirit in our encouragement and management of the community use of Park 20 and we believe that we have set an exceptional standard for the next century.

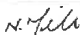
As per the Council's Land Management Plan in reference to Park 20;

“Park 20 is predominantly a recreational and sporting landscape, that provides for a range of sporting activities including hockey, athletics, tennis, pétanque and bicycle motorcross (BMX). A number of clubrooms and sheds support these various sporting pursuits.”

Pulteney's custodianship of the land at Park 20 has allowed for the aims of the Park to be respected with a sporting focus that has allowed thousands of participants to engage in sporting activities over the 100 years that Pulteney has coordinated the management of the land.

The future use of Kurangga along with the associated elements including structures and community use can be best viewed with an appropriate longer-term vision of the Park as well as its physical, social and economic constraints. Pulteney seek to work with Council to ensure appropriate steps are taken in considering the future of Park 20, seeking to achieve what is needed for both the Council and the school to be content with a shared ambition for the overall betterment of community sport, the park lands and the larger Pulteney community.

Section 5 Declaration

SECTION 5: DECLARATION			
<ul style="list-style-type: none">I confirm that the information I have provided in this form is accurate and complete.I understand that submission of an expression of interest does not guarantee that my application will be successful.I understand that to have this application considered, a Certificate of Currency is required.I have read and understood the Park Lands Lease and Licence Policy and agree to comply with all conditions set out therein.			
First Name	Nicholas	Surname	Miller
Signature		Submission Date	14 June 2024

References

Adelaide Park Lands Authority, Kadaltilla 2023-2028 Strategic Plan, [Kadaltilla-Strategic-Plan-2023-2028.pdf \(d31atr86jnqrq2.cloudfront.net\)](#)

City of Adelaide, Active City Strategy 2013-2023, [strategy-active-city-2012-2023.pdf \(d31atr86jnqrq2.cloudfront.net\)](#)

City of Adelaide, Community Land Management Plan for the Adelaide Parklands, 2023, [plan-clmp-adelaide-park-lands.pdf \(d31atr86jnqrq2.cloudfront.net\)](#)

City of Adelaide, Strategic Plan 2024-2028, [strategic-plan-web.pdf \(d31atr86jnqrq2.cloudfront.net\)](#)

Office for Recreation, Sport and Racing, Recreation, Sport and Racing Strategic Plan 2021-2025, [Recreation-Sport-and-Racing-Strategic-Plan-2021-2025.pdf \(orsr.sa.gov.au\)](#)

Appendix A

Use of Kurangga (Park 20) by both short-term hirers and regular sub-lessees

Organisation	2021 Hours Used	2022 Hours Used	2023 Hours Used	Total Usage
Pulteney Old Scholars Association	4,000	4,000	4,000	12,000
Pulteney Grammar School	2,200	2,200	2,200	6,600
SANFL AFL Umpires	496	400	380	1,276
Glenelg Cricket Club	50	45	260	355
St Aloysius	28	141.5	205	374.5
Sturt Cricket Club	50	48	82	180
Century Cricket Club	0	0	176	176
Walkerville Cricket Club	65	33	40	138
Marion Cricket Club	49.5	44	0	93.5
Aish Academy	0	42	50	92
SAAS	20	19	21	60
Adelaide Premier League	0	42	0	42
Gillies Street Primary School	35	0	6	41
Athelstone Cricket Club	20	20	0	40
Kensington Cricket Club	27	0	6	33
Siddons Cricket Academy	15	15	0	30
SA Veterans Cricket Club	0	0	18	18
SA Athletic League	8.5	7	0	15.5
Burnside Primary School	0	12	0	12
School Sport SA – SAPSASA Girls Football	0	0	12	12
Mawson Lakes Cricket Club	0	0	10	10

Glenunga Cricket Club	0	0	9.5	9.5
Hunter BDM	8	0	0	8
Brighton Cricket Club	5.5	0	0	5.5
Brisbane Roar	4.5	0	0	4.5
SA Water	4	0	0	4
Holman Hodge	3	0	0	3
Plant Life	2.5	0	0	2.5
Mesana	2	0	0	2
North Adelaide Football Club	0	2	0	2
St Peter's Girls College	1.5	0	0	1.5
Nazareth College	0	1.25	0	1.25
St John's Grammar School	0	1.25	0	1.25
Total Usage	7,095	7,073	7,475.5	21,643.5

Appendix B – Certificate of Currency, Public Liability Insurance



Certificate of Currency

Date of Issue: 2 November 2023

Nick Miller
Pulteney Grammar School Inc
190 South Terrace
ADELAIDE SA 5000

Contact: Isabell Mifsud
t: +618 3011 1113
e: isabell.mifsud@aon.com

We hereby certify that the under mentioned insurance policy is current as at the date of this certificate, please refer to the important notices below.

Policy Type	Public & Products Liability
Insured	Pulteney Grammar School Inc, The Trustees for The Pulteney Foundation including all affiliated and associated bodies.
Insurer	QBE Insurance Australia Limited - ABN 78 003 191 035 (& Chubb Australia Insurance Limited - ABN 23 001 642 020 where limit exceeds \$50,000,000 and does not exceed \$150,000,000)
Policy Number(s)	AQEP01574PLB
Period of Insurance	From: 4.00 pm 1 November 2023 Local Standard Time To: 4.00 pm 1 November 2024 Local Standard Time
Interest Insured	Insured's legal liability to pay compensation in respect of death or injury to any person (including disease), or damage to property, caused by an occurrence in connection with the business activities of an Educational Institution
Limits of Liability	Public Liability \$100,000,000 any one event, except Products Liability \$100,000,000 any one period of insurance
Special Extension	Policy includes as an insured party, any person, principal, organisation, trustee or estate to whom or to which the Insured is obligated by virtue of any statute or of a contract or agreement to indemnify or to provide insurance as is afforded by this Policy, but only to the extent required by such statute or contract in any event only for such coverage and limits of liability as provided in this Policy. The policy has a cross liability clause.
Situation of Risk	Anywhere in Australia, and elsewhere in the world in respect of temporary visits
Interested Parties	Adelaide City Council Rowing SA

Further Information

Should you have any queries, please contact us on the details set out at the top of the page.

Important notes

- Aon does not guarantee that the insurance outlined in this Certificate will continue to remain in force for the period referred to as the Policy may be cancelled or altered by either party to the contract, at any time, in accordance with the terms of the Policy and the Insurance Contracts Act 1984 (Cth).
- Aon accepts no responsibility or liability to advise any party who may be relying on this Certificate of such alteration to or cancellation of the Policy.
- Subject to full payment of premium
- This certificate does not:
 - represent an insurance contract or confer rights to the recipient; or
 - amend, extend or alter the Policy
 - contain the full policy terms and conditions

Aon Reference: 140800

Aon Risk Services Australia Limited ABN 17 000 434 720 AFSL 241141
Level 22 Adelaide, SA, 5000

Page 1



Certificate of Currency Student Work Experience & Community Activity Programmes

Date of Issue: 2 November 2023

Nick Miller
Pulteney Grammar School Inc
190 South Terrace
ADELAIDE SA 5000

Contact: Isabell Mifsud

t: +618 3011 1113
e: isabell.mifsud@aon.com

We hereby certify that the under mentioned insurance policy is current as at the date of this certificate, please refer to the important notices below.

Policy Type	Student Personal Accident
Insured	Pulteney Grammar School Inc, The Trustees for The Pulteney Foundation whilst participating on approved work experience, vocational or structured workplace learning placements and / or community activity programs
Insurer	Chubb Australia Insurance Limited - ABN 23 001 642 020
Policy Number(s)	04POED7734
Period of Insurance	From: 4.00 pm 1 March 2023 Local Standard Time To: 4.00 pm 1 March 2024 Local Standard Time
Situation of Risk	Anywhere in the world

Further Information

Should you have any queries, please contact us on the details set out at the top of the page.

Important notes

- Aon does not guarantee that the insurance outlined in this Certificate will continue to remain in force for the period referred to as the Policy may be cancelled or altered by either party to the contract, at any time, in accordance with the terms of the Policy and the Insurance Contracts Act 1984 (Cth).
- Aon accepts no responsibility or liability to advise any party who may be relying on this Certificate of such alteration to or cancellation of the Policy.
- Subject to full payment of premium
- This certificate does not:
 - represent an insurance contract or confer rights to the recipient; or
 - amend, extend or alter the Policy
 - contain the full policy terms and conditions

Aon Reference: 140800

Aon Risk Services Australia Limited ABN 17 000 434 720 AFSL 241141
Level 22 Adelaide, SA, 5000

Page 5



Certificate of Currency

Date of Issue: 2 November 2023

Nick Miller
Pulteney Grammar School Inc
190 South Terrace
ADELAIDE SA 5000

Contact: Isabell Mifsud

t: +618 3011 1113
e: isabell.mifsud@aon.com

We hereby certify that the under mentioned insurance policy is current as at the date of this certificate, please refer to the important notices below.

Policy Type	Voluntary Workers Personal Accident
Insured	Pulteney Grammar School Inc, The Trustees for The Pulteney Foundation including all subsidiary companies, organisations and other entities in which the Insured has a controlling interest
Insurer	Chubb Australia Insurance Limited ABN 23 001 642 020
Policy Number(s)	AONVWPP00199
Period of Insurance	From: 4.00 pm 1 November 2023 Local Standard Time To: 4.00 pm 1 November 2024 Local Standard Time
Insured Persons	Voluntary Workers (including council / board members) whilst engaged in activities for the Insured including associated travel (excluding charter aircraft flights)
Aggregate Limit of Liability	\$3,000,000
Limits of Liability	Death and Capital Benefits 5 times the insured person's annual income, subject to a minimum of \$200,000 and a maximum of \$400,000 Weekly Injury Benefit up to \$2,000 Broken or Fractured Bones up to \$2,500 Non-Medicare Expenses \$5,000 Emergency Help (non-income earners) up to \$300 per week Student Tutorial Expenses (full time students) up to \$300 per week
Interest Insured	Accidental Death, Permanent or Temporary Disablement, subject to policy exclusions
Situation of Risk	Anywhere in the world

Further Information

Should you have any queries, please contact us on the details set out at the top of the page.

Important notes

- Aon does not guarantee that the insurance outlined in this Certificate will continue to remain in force for the period referred to as the Policy may be cancelled or altered by either party to the contract, at any time, in accordance with the terms of the Policy and the Insurance Contracts Act 1984 (Cth).
- Aon accepts no responsibility or liability to advise any party who may be relying on this Certificate of such alteration to or cancellation of the Policy.
- Subject to full payment of premium
- This certificate does not:
 - represent an insurance contract or confer rights to the recipient;
 - amend, extend or alter the Policy
 - contain the full policy terms and conditions

Aon Reference: 140800

Aon Risk Services Australia Limited ABN 17 000 434 720 AFSL 241141
Level 22 Adelaide, SA, 5000

Page 6

Appendix C Operating Expenses for Park 20

	Period to Date				Year to Date				Last Year Actual
	01/01/2024 to 30/04/2024				01/01/2024 to 30/04/2024				
INCOME	Actual	Budget	Variance	%	Actual	Budget	Variance	%	
4478 - Sundry Income	(0.00)	(0)	0	0	(0.00)	(0)	0	0	\$(0.00)
TOTAL INCOME:	(0.00)	(0)	0	0	(0.00)	(0)	0	0	(0.00)
EXPENSE									
5326 - Contract Maintenance	3,360.00	0	(3,360)	0	3,360.00	0	(3,360)	0	\$0.00
5370 - Equipment Purchases	0.00	0	0	0	0.00	0	0	0	\$0.00
5410 - Government Rates & Taxes	0.00	0	0	0	0.00	0	0	0	\$40.00
5460 - Leasing Costs - Property	0.00	0	0	0	0.00	0	0	0	\$0.00
5518 - Oval & Grounds Supplies	47,126.74	54,888	7,761	14	47,126.74	54,888	7,761	14	\$55,445.12
5578 - Repairs & Maintenance	13,231.86	12,000	(1,232)	-10	13,231.86	12,000	(1,232)	-10	\$28,740.84
5642 - Telephone	0.00	0	0	0	0.00	0	0	0	\$0.00
5650 - Training	0.00	0	0	0	0.00	0	0	0	\$0.00
5668 - Uniform Expenses	1,446.19	0	(1,446)	0	1,446.19	0	(1,446)	0	\$751.89
5674 - Vehicle Expenses	1,330.91	0	(1,331)	0	1,330.91	0	(1,331)	0	\$2,783.15
5732 - Garden Maintenance & Flowers	436.90	0	(437)	0	436.90	0	(437)	0	\$4,802.91
5768 - Gifts - Staff	0.00	0	0	0	0.00	0	0	0	\$0.00
TOTAL EXPENSE:	66,932.60	66,888	(45)	0	66,932.60	66,888	(45)	0	92,563.91
INTEREST									
5450 - Interest - Leases & Hire Purchase	0.00	0	0	0	0.00	0	0	0	\$0.00
TOTAL INTEREST:	0.00	0	0	0	0.00	0	0	0	0.00
SALARY									
5002 - Salaries	0.00	0	0	0	0.00	0	0	0	\$0.00
5009 - Salaries - Buildings, Grounds, & Other	65,836.06	86,806	20,970	24	65,836.06	86,806	20,970	24	\$258,687.55
5010 - Contract Salaries	15,420.17	0	(15,420)	0	15,420.17	0	(15,420)	0	\$0.00
5050 - Superannuation - SGL	7,697.49	12,349	4,652	38	7,697.49	12,349	4,652	38	\$30,010.14
5054 - Personal Leave	818.49	0	(818)	0	818.49	0	(818)	0	\$3,881.97
5056 - Annual Leave	11,735.48	372	(11,364)	-3,057	11,735.48	372	(11,364)	-3,057	\$20,035.06
5058 - Long Service Leave	(48.84)	0	49	0	(48.84)	0	49	0	\$(27.43)
5066 - Workcover	0.00	59	59	100	0.00	59	59	100	\$603.13
TOTAL SALARY:	101,458.85	99,585	(1,873)	-2	101,458.85	99,585	(1,873)	-2	313,190.42
Profit / (Loss):	(168,391.45)	(166,473)	(1,918)	-1	(168,391.45)	(166,473)	(1,918)	-1	(405,754.33)

Appendix D Pulteney Overall Financial Summary

Financial Summary	2022 \$	2023 \$
Net Recurrent Income		
Australian Government recurrent funding	5,224,891	6,252,300
State/Territory government recurrent funding	1,226,532	1,407,500
Fees, charges and parent contributions	18,710,134	20,916,960
Other private sources	365,903	437,697
Total Recurrent Income	25,527,461	29,014,457
Total Capital Income	1,333,288	168,512
Total	26,860,749	29,182,968
Expenditure		
Total Labour Costs	19,285,121	20,066,921
Total Non Salary	8,595,538	10,532,479
Total Expenditure	27,880,658	30,599,400
Total Trading Activities	- 324,171 -	403,306

Appendix E Letter of Support from Pulteney ELC



Pulteney Grammar School – EOI Park 20

City of Adelaide
Park Lands Planner
Colonel Light Centre 25 Pirie Street
Adelaide SA 5000

To whom it may concern

Re: Kurangga (Park 20) Expression of Interest – Pulteney Grammar School Inc

We are writing to you in relation to the above submission from Pulteney Grammar School Inc (Pulteney), for their continuing use of the facilities and grounds located at Kurangga (Park 20).

Pulteney Early Learning Centre provides a Bush Kindy programme for children attending the service from 3 years to 5 years, four days a week. The given Kurna name for this programme is Yartangka meaning on country. We established this programme in April 2023. It is having a considerable impact on children's overall wellbeing, knowledge of Kurna language and culture, knowledge of land, environmental sustainability and children being advocates for the preservation of the plants, birds and creatures living above and below the land.

The children have experienced three Yartangka locations, each with new terrain and possibilities. Collectively children have aptly named these places Stick City, Rock City and Ant City. When it is time to explore a new camp site the adults explain to the children that we are moving to help Kurna land regenerate. For example, "The long wavy grass at Rock City that we love to run through is no longer wavy. We need to give it time to grow and stand upright again."

A Yartangka expectation is to be kind to nature and respect nature. The adults are witnessing children being nature advocates and keeping each other accountable. We often hear the children's whisperings, "Don't step on that ant. It's nature. Move back. Just look. It's their home, not ours." By considering the perspectives of the living things, children are beginning to discover the interconnectedness of nature.

A significant part of the children's learning is being aware of the scar on the gum tree where Jack Buckskin cut a shield. We regularly use this tree as an important place to acknowledge Kurna country.

Being a city school, some children who attend Pulteney Early Learning Centre live in apartments with limited or no outdoor play space. Students and staff value the opportunity to be in open space where children can engage in large muscle play and games.

Jenny Brozel, Yartangka ELC Teacher
ELC Students
Pulteney Grammar School

Appendix F Letter of Support from Adelaide Harriers Club



Nick Miller
Business Development Manager
Pulteney Grammer School

4 June 2024

Dear Mr Miller,

Letter of support for Pulteney's continuing management of Park 20

Adelaide Harriers Athletic Club would like to convey its full support for Pulteney's application for a renewal of its lease over Park 20 in the Adelaide Parklands.

Our Club has benefited from a strong and collaborative relationship with Pulteney, brought about through our shared use of Park 20, for over 50 years.

Our organisations have worked together to effectively share use of the grounds and facilities within Park 20 - with Adelaide Harriers ensuring year-round use of the running track, internal sports field and clubrooms.

We estimate that over 500 athletes use the facilities regularly with 30% of our members being women and girls. Adelaide Harriers also supports participation in sport by all ages, through our affiliation with AH Little Athletics (also located at Park 20) and our large numbers of masters athletes.

Pulteney's commitment to the ongoing maintenance of the facilities – as well as its collaborative approach to management of the space - is appreciated by all athletes, administrators and committee members involved in Adelaide Harriers.

We understand that Pulteney continues to explore the possibility of developing Park 20 into a more modern community asset and we support its efforts in this regard.

We look forward to continuing to work with Pulteney to collectively provide quality options for school and community sport in Park 20 into the future.

Your sincerely

Committee
Adelaide Harriers Athletic Club

Park 20 Cnr South Tce & Peacock Rd, South Parklands.
PO Box 6520 Halifax St, Adelaide 5000
ABN 79 717 097 818
www.adelaideharriers.com
e: enquiries@adelaideharriers.com

Appendix G Letter of Support from Aish Football Academy

Friday 31 May 2024

Nick Miller
Business Director
Pulteney Grammar School

Dear Mr Miller,

Re: Aish Football Academy use of Park 20 in the Adelaide Parklands

The Aish Football Academy have been using the Pulteney Grammar School ovals for the past three years. Given our Academy participants come from across the city, it was imperative for us to find a central place to train that was easy for everyone to get to.

The coaching of our three squads totalling 72 young men and women was without issue and undertaken without any challenges.

Included in these squads were a first nation student who was sponsored to attend by the Miriam Rose Foundation Aboriginal Corporation, sponsored students from low socio-economic families and students from private colleges and public schools (junior and senior).

The ovals have been maintained superbly and our interaction with the Pulteney groundsmen and staff has been excellent.

We are grateful for the relationship we continue to share with Pulteney and we hope to partner with them for future endeavours.

I look forward to our continued relationship with Pulteney in utilizing these facilities for years to come.

Please feel free to contact me should you have any questions.

Kind regards,



Michael Aish
Aish Football Academy
Founder & Director | Head Coach
e: admin@aishacademy.com.au
w: www.aishacademy.com.au

Appendix H Letter of Support from Glenelg District Cricket Club



GLENELG DISTRICT CRICKET CLUB

established 1907

Mr. Nick Miller,
Business Director,
Pulteney Grammar School.

30 May 2024

RE: Park 20 Facilities

The Glenelg District Cricket Club is a premier cricket club in South Australia and fields 11 teams in men's, women's and junior competitions. We have been truly fortunate to be able to use your grounds for our junior competitions for the last couple of the years. The grounds and facilities are presented at a level which is appreciated by our club, other clubs and the association.

The task of finding suitable cricket grounds to cater for several teams is particularly challenging, especially with the growth of participation in many sports and the cross over of seasons between sports. Currently we program one of our grades (2 teams) play at Pulteney Grammar's oval with them playing alternative games at the oval. The pitch and oval and of a particularly good standard for the grades played at the oval.

In addition to the use of the facilities for games, in the 2023/24 season Glenelg District Cricket Club, faced an abnormal situation with the redevelopment of its practice facilities at Glenelg Oval which made them unavailable for the whole season. Pulteney Grammar kindly allowed the club to hire the facilities for training sessions, with over 100 players involved – juniors and seniors.

Any issues in relation to the state of facilities and it is well known that cricket pitches are subject to the vagaries of the weather (particularly rain) regarding preparation and use have been dealt with by both parties in pleasant and practical way.

We also understand that SACA and Sturt Cricket Club have used adjacent facilities, this is testament to the quality and suitability of the facilities.

The spirit of cooperation between all parties has been excellent and whilst we should have no need to use the practice facilities in 2024/25, we do look forward to the use of the grounds on a Saturday for a number of years to come.

Regards

Paul Angley
Secretary
Glenelg District Cricket Club

MAJOR SPONSOR

UNDER-18 SPONSOR

CORPORATE PARTNERS



The Fotobase Group
for the best by the best
www.fotobase.com.au



Search
MORTGAGES

GLIDEROL
garage doors

METCALF
GROUP PTY

Dr. Chris Wilson
ORTHOPAEDIC SURGEON



Stratfordia
Stanhope Street
Road Glenelg East



PO Box 277
Glenelg SA 5045



gdc.net.au

Appendix I Letter of Support from SACA



SOUTH AUSTRALIAN CRICKET ASSOCIATION LTD.

ABN 44 623 135 393

ADELAIDE OVAL
PO BOX 545, NORTH ADELAIDE, SA 5006

ADMINISTRATION
P: 08 8300 3800 | F: 08 8231 4346 | E: sacareception@saca.com.au

MEMBERSHIP
P: 08 8300 3232 | E: membership@saca.com.au

Emily Heywood-Smith

Capetal - Policy Manager
Level 1 89 King William Street
Adelaide SA 5000

28 May 2024

Dear Emily,

Re: SACA's Support for Park 20 facilities at Pulteney Grammar School

On behalf of the South Australian Cricket Association, SACA, I am writing to express our support for Pulteney Grammar School renewing their lease at Park 20. Over the course of their previous lease, Pulteney Grammar School has provided outstanding cricket facilities for various activities, events, and competitions.

The usage of Park 20 has been instrumental in developing and promoting junior cricket in our community. The facilities have served various purposes including as a training ground for clubs, along with a venue for numerous memorable matches, community events, and youth development programs including junior girls' and boys' premier competitions.

We understand the challenges that come with maintaining and managing such high-quality cricket facilities, and we deeply appreciate the effort and resource Pulteney Grammar School has invested in ensuring they are available for community use. The impact of Pulteney Grammar School support extends beyond just providing a physical space; it has enabled us to foster teamwork, discipline, and a healthy lifestyle among participants of all ages.

We estimate that a total of 2,250 participants have utilised the Park 20 facilities across various SACA competitions in the 2023/24 season. We are excited to further utilise Pulteney Grammar School facilities in the future, specifically targeting underrepresented groups in sport, including First Nations, Women's and Girls sport, low-income families, and multicultural users.



PRINCIPAL PARTNER OF
CRICKET IN SOUTH AUSTRALIA

www.saca.com.au



We believe that a strong partnership between SACA and Pultney Grammar School will create a catalyst for continued promotion of strong physical and mental health in our community. I would be delighted to discuss this proposal further and explore how we can support further infrastructure growth on site. Specifically, SACA would love to develop plans for more inclusive female friendly changerooms on site.

We look forward to continuing to work closely together and create great opportunities for our cricketing community.

Yours sincerely,



Joel Cross

General Manager – Community Cricket
South Australian Cricket Association



PRINCIPAL PARTNER OF
CRICKET IN SOUTH AUSTRALIA

www.saca.com.au



Appendix J Letter of Support from SANFL



We love footy

5 June 2024

Mr. Nick Miller
Business Director
Pulteney Grammar School
190 South Terrace
ADELAIDE SA 5000

Dear Mr. Miller,

I am writing to express SANFL's support for Pulteney Grammar School and its continued utilisation of Park 20 in the Adelaide Parklands.

Since 2019, SANFL has enjoyed a fruitful partnership with Pulteney Grammar School, made possible through a sub-license agreement encompassing the usage of both Morgan and Atkinson ovals in Park 20.

These ovals, along with the amenities block, have served as a crucial venue for SANFL football activities, hosting events twice a week throughout the year. To expand the capacity at Park 20, SANFL took the initiative to install oval lighting, facilitating year-round usage especially during the winter months.

Currently, our SANFL Umpiring Academy, comprising of 200 participants, utilise the venue for training sessions. With 10% of these participants being female and the majority falling within the 18-30 year age bracket, our academy plays a vital role in fostering umpiring talent.

Umpiring is not only essential for the success of our sport but also increasingly attractive to young individuals seeking avenues for earning, maintaining a healthy lifestyle, building networks, and honing leadership skills. Notably, in 2023, we witnessed a remarkable 43% year-on-year increase in participation, with a significant surge in female involvement, particularly among those aged 14-18 years.

We are immensely fortunate to have access to Park 20 and the school facilities within the Pulteney campus. This access has been instrumental in enabling our academy to train collectively, fostering volunteer recruitment and retention, nurturing aspiring umpires, and retaining participants.

Our experience with the oval facilities at Park 20 has been overwhelmingly positive, largely owing to the professionalism and responsiveness of your staff at Pulteney Grammar. Despite challenges with end-of-life irrigation systems, the maintenance of the ovals has been commendable. Moreover, significant improvements, such as addressing poor drainage and

SANFL
ABN 59 518 757 737

Office
Level 2, Riverbank Stand,
Adelaide Oval, War Memorial Drive,
North Adelaide SA 5006

Postal Address
PO Box 606 Tyrnte Street,
North Adelaide SA 5006
T 08 8424 2200
W sanfl.com.au

MAJOR PARTNERS



undertaking re-seeding as part of the annual maintenance program, have resulted in safer playing surfaces that can withstand increased usage.

However, we do have recommendations for further enhancement. The existing amenities block warrants immediate attention, as it currently falls short of modern standards and functionality. We advocate for its upgrade to include compliant changerooms, toilets, and showers for both genders, increased storage capacity, shelter from the elements, and a meeting room equipped with modern technology. A new, compliant building at this site would elevate Park 20 to one of the premier venues in the parklands, ensuring the safety and comfort of all users.

Additionally, we recommend the installation of additional oval lighting, particularly at Atkinson Oval, to unlock its full potential.

SANFL wholeheartedly endorses Pulteney Grammar School to continue to have the head license for Park 20. Your school's ability to collaborate with community organisations such as SANFL and your dedication to the management and maintenance of the ovals ensures that the space can continue to be utilised by a broad range of users. I am confident that with ongoing support and investment, Pulteney Grammar School will continue to deliver a venue that will undoubtedly remain a valuable asset for generations to come.

Thank you for the opportunity to participate in this matter and we wish Pulteney Grammar School a successful outcome.

If you would like to discuss this letter further, please do not hesitate to contact Belinda Marsh, Head of Infrastructure and Government Relations on 0438 408 305.

Sincerely,



Shane Harris
Head of Umpiring



Belinda Marsh
Head of Infrastructure and Government Relations

Kadaltilla

Adelaide Park Lands Authority

Kadaltilla 2024 Annual Community Forum

Thursday, 25 July 2024
Board Meeting

Author: Kathryn Goldy, Acting
Manager Governance

Public

Purpose

It is a requirement under section 4.10 of the Kadaltilla Charter that an Annual Community Forum be held by the end of October in each year at a place and time determined by resolution of the Kadaltilla/Adelaide Park Lands Authority (Kadaltilla). Notice of the Annual Community Forum must be given to Board Members and the public at least 21 days prior to the scheduled date.

The proposed format of the 2024 Annual Community Forum is multiple pop-up sessions, held over four separate days in four different locations. This approach is in order to target different sections of the population and to reach non-Park Lands users and was successful in 2023 when it was deployed for the first time. The theme for the 2024 Annual Community Forum will be “Rediscover Your Park Lands”.

The purpose of this report is to seek the approval of Kadaltilla for the theme, proposed dates and locations to host the 2024 Annual Community Forum.

Recommendation

That the Kadaltilla / Adelaide Park Lands Authority:

1. Approves the theme for the 2024 Annual Community Forum as “Rediscover Your Park Lands”.
 2. Approves the 2024 Annual Community Forum to be held on:
 - 2.1. Saturday 31 August 2024 from 12:00pm to 2:00pm at Victoria Park / Pakapakanthi (Park 16)
or
Sunday 8 September 2024 from 12:00pm to 2:00pm at G S Kingston Park / Wirrarninthi (Park 23).
 - 2.2. Wednesday 18 September from 11:00am to 1:00pm at Hindmarsh Square / Mukata
or
Saturday 14 September 2024 from 11:00am to 3:00pm at Gladys Elphick Park / Narnungga (Park 25)
 - 2.3. Thursday 3 October 2024 from 10:00am to 12:00pm in Blue Gum Park / Kurangga (Park 20)
or
Peppermint Park / Wita Wirra (Park 18)
 - 2.4. Wednesday 9 October 2024 from 10:00am to 12:00pm in Lefevre Park / Nantu Wama (Park 6).
 3. Authorises administration in consultation with the Kadaltilla/Adelaide Park Lands Authority Presiding Member to alter the date and/or time of any of the above community forum events, if required.
-

Implications

Adelaide Park Lands Management Strategy 2015-2025	Adelaide Park Lands Management Strategy 2015-2025 The Annual Community Forum will be used to engage with stakeholders and the community on the revised Adelaide Park Lands Management Strategy (APLMS).
2023-2028 Strategic Plan	Kadaltilla / Adelaide Park Lands Authority 2023-2028 Strategic Plan Strategic Plan Alignment – Expert Advice 4.5 Increase the profile of the Kadaltilla Board
Policy	Not as a result of this report
Consultation	Not as a result of this report
Resource	Delivery of an Annual Community Forum will require announcement of the forum and public engagement solicited in two ways: an on-site engagement (the Forum) and interactively via an online website which will be hosted on the City of Adelaide Our Adelaide webpage.
Risk / Legal / Legislative	It is a requirement under the Kadaltilla Charter that an Annual Community Forum is held by the end of October in each year at a place and time determined by resolution of the Board.
Opportunities	The Annual Community Forum provides an opportunity for diverse input from a range of perspectives while increasing awareness of the APLMS and understanding of the Park Lands.
City of Adelaide Budget Allocation	\$6,000
Life of Project, Service, Initiative or (Expectancy of) Asset	Not as a result of this report
Ongoing Costs (eg maintenance cost)	Not as a result of this report
Other Funding Sources	Not as a result of this report

Discussion

1. The Kadaltilla / Adelaide Park Lands Authority Charter (Kadaltilla Charter) sets out the requirement for an Annual Community Forum in section 4.10, which states:
 - 4.10.1 *An Annual Community Forum shall be held by the end of October in each year at a place and time determined by resolution of the Board.*
 - 4.10.2 *Notice of the Annual Community Forum must be given to Board Members and accessible by the public at least 21 days prior to the scheduled date.*
 - 4.10.3 *A reasonable number of copies of any document or report supplied to Board Members for the Annual Community Forum must be available for members of the public at the forum.*
 - 4.10.4 *The Annual Community Forum will be conducted in a place accessible to the public to discuss business of a general nature aimed at reviewing the progress and direction of the Authority.*
2. The purpose of the Annual Community Forum is to allow members of the public a chance to meet with Kadaltilla Board Members and discuss directly with Board Members activities that were undertaken by Kadaltilla in the previous financial year or planned upcoming activities by Kadaltilla.
3. Kadaltilla Board Members and Administration can also use the forum as an opportunity to gauge community feedback on new policies or proposals, such as the Kadaltilla 2023-2028 Strategic Plan or the updated Adelaide Park Lands Management Strategy (APLMS).
4. The theme for the 2024 Annual Community Forum is proposed to be “Rediscover Your Park Lands”. The theme is intended to encourage exploration of the Park Lands and the diversity of its various offerings to the community.
5. The 2024 Annual Community Forum is proposed to be four 2-4 hour pop-up sessions held on four days (a mixture of weekdays and weekends) in four different locations in order to target different members of the public.
 - 5.1. Pop-Up Session 1 is proposed to be held in either:
 - 5.1.1. Victoria Park / Pakapakanthi (Park 16) on Saturday 31 August 2024 from 12:00pm to 2:00pm;
or
G S Kingston Park / Wirrarninthi (Park 23) on Sunday 8 September 2024 from 12:00pm to 2:00pm.
 - 5.2. Pop-Up Session 2 is proposed to be held in either:
 - 5.2.1. Hindmarsh Square / Mukata on Wednesday 18 September from 11:00am to 1:00pm;
or
Gladys Elphick Park / Narnungga (Park 25) on Saturday 14 September 2024 from 11:00am to 3:00pm.
 - 5.3. Pop-Up Session 3 is proposed to be held on Thursday 3 October 2024 from 10:00am to 12:00pm in either:
 - 5.3.1. Blue Gum Park / Kurangga (Park 20) in front of TreeClimb Adelaide
or
the Adelaide Zoo entrance off Plane Tree Drive
or
Peppermint Park / Wita Wirra (Park 18) in front of Adelaide Himeji Garden.
 - 5.4. Pop-Up Session 4 is proposed to be held in Lefevre Park / Nantu Wama (Park 6) at the Glover Playground North Adelaide on Wednesday 9 October 2024 from 10:00am to 12:00pm.
6. The location of Pop-Up Session 1 has been selected to coincide with sporting matches and target sporting spectators through one of two possible locations:
 - 6.1. Location 1 targets the soccer match on Victoria Park Southern Oval, and Cricket and Pedal Prix on the Criterium Track. The date and time of Pop-Up Session 1 for Location 1 has been selected to coincide with the scheduled soccer and cricket matches and peak attendance rates to maximise public attendance opportunities.

- 6.2. Location 2 targets a West Adelaide Raptors Soccer match and sporting spectators. The date and time of Pop-Up Session 1 for Location 2 has been selected to coincide with the scheduled West Adelaide Raptors Soccer Club match and peak attendance rates to maximise public attendance opportunities.
7. The location of Pop-Up Session 2 has been selected to either target:
 - 7.1. Non-Park Lands users:
 - 7.1.1. The date and time of this Pop-Up Session 2 has been selected to coincide with lunchtime to maximise foot traffic in and through the square.
 - 7.2. Partnership with a large, planned event occurring in the Park Lands:
 - 7.2.1. The date and time of Pop-Up Session 2 has been selected to coincide with the “Skate Park Leagues” event to maximise public attendance opportunities.
 - 7.2.2. The “Skate Park Leagues” (SPL) is a free entry event being held in Gladys Elphick Park / Narnungga (Park 25) on Saturday 14 September 2024 from 11:00am to 4:00pm.
 - 7.2.3. Skate Park Leagues bring communities together in a public space where they have the opportunity to feel connected and celebrate the talents of local skate park users of all ages, genders and backgrounds together. This is done through running the SPL series which are community-based grassroots events focusing on positive participation with Skate, Scoot, (Inline in TAS) and BMX competitions. The SPL series encourages a positive skate park culture of support and inclusion in the skate competitions.
8. The location of Pop-Up Session 3 has been selected to target a popular Park Lands attraction with mixed demographics.
 - 8.1. The date and time of Pop-Up Session 3 has been selected to coincide with visitors to one of three popular Park Lands attractions being TreeClimb, Adelaide Zoo, or Adelaide Himeji Garden.
9. The location of Pop-Up Session 4 has been selected to target families with young children attending.
 - 9.1. To maximise public attendance opportunities, the date and time of Pop-Up Session 4 have been selected to coincide with the school holidays and the busy period at the North Adelaide Glover Playground and therefore this pop-up session has been allocated a 4 hour time slot.
10. The locations of the Annual Community Forum pop-up sessions have been selected to meet the following requirements:
 - 10.1. Disability access.
 - 10.2. Proximity to accessible parking and public transport.
 - 10.3. Showcase an area of the Adelaide Park Lands, where applicable.
11. Adjoining Council locations were considered, however other locations identified did not meet the requirements.
12. In 2022 the annual community forum was held at one location, the Adelaide Pavilion in Veale Gardens; on that day approximately 100 people participated.
13. Last year approximately 400 people participated in person at the 2023 Annual Community Forum, which was held over four pop-up sessions at:
 - 13.1. The Adelaide Central Market on Tuesday 12 September 2023 from 11:00am – 1:00pm
 - 13.2. Mary Lee Park (Park 27B) on Sunday 17 September 2023 from 10:00am – 12:00pm
 - 13.3. Victoria Park / Pakapakanthi (Park 16) on Sunday 8 October 2023 from 10:00am – 12:00pm
 - 13.4. Pelzer Park / Pityarilla (Park 19) on Thursday 19 October 2023 from 11:00am – 1:00pm
14. The different format of the Community Forum proved very successful for community engagement and therefore it is proposed that the 2024 Annual Community Forum again be held at various locations across the City. The pop up sessions will discuss business of a general nature aimed at reviewing the progress and direction of Kadaltilla. Giveaways such as coffee and plants may be used to maximise public engagement.

Attachments

Nil

- END OF REPORT -

Kadaltilla

Adelaide Park Lands Authority

Update on the World Heritage Listing for the Adelaide Park Lands and Rural Settlement Landscapes

**Thursday, 25 July 2024
Board Meeting**

Author:

Sarah Gilmour, Associate
Director Park Lands, Policy &
Sustainability

Public

Purpose

The purpose of this report is to provide an update on the progress of the Tentative List submission for the World Heritage Bid for Adelaide and its Rural Settlement Landscapes.

Recommendation

That the Kadaltilla / Adelaide Park Lands Authority:

1. Receives and notes the report contained in Item 7.1 on the Agenda for the meeting of the Board of Kadaltilla / Adelaide Park Lands Authority held on 25 July 2024.
-

Implications

<p>Adelaide Park Lands Management Strategy 2015-2025</p>	<p>Adelaide Park Lands Management Strategy 2015-2025</p> <p>Outcome - The Park Lands are valued as a National Heritage site worthy of World Heritage Listing</p> <p>Action 1 – Secure a commitment to pursue World Heritage listing</p> <p>Action 2 – Develop the case for World Heritage listing.</p>
<p>2023-2028 Strategic Plan</p>	<p>Kadaltilla / Adelaide Park Lands Authority 2023-2028 Strategic Plan</p> <p>Strategic Plan Alignment – Cultural Value</p> <p>Objective 1.4 Champion the development of World Heritage listing nomination</p> <p>Initiative 1.4 Regularly review World Heritage listing submission progress</p> <p>Measure of Success 1.4 State Government support for World Heritage listing submission by 2026.</p>
<p>Policy</p>	<p>The World Heritage listing of Adelaide and its rural settlement landscapes seeks to landmark the site and protect the area for future generations to enjoy and appreciate.</p>
<p>Consultation</p>	<p>Not as a result of this report</p>
<p>Resource</p>	<p>Not as a result of this report</p>
<p>Risk / Legal / Legislative</p>	<p>Not as a result of this report</p>
<p>Opportunities</p>	<p>Opportunities created through World Heritage listing include:</p> <ul style="list-style-type: none"> • Improved understanding and recognition of the significance of Adelaide and its rural settlement landscapes • Global profile and cultural tourism business and international investment attraction • Creating a shared narrative about Aboriginal and Torres Strait Islander culture and history that aligns with colonial settlement • Greater levels of protection for the Adelaide Park Lands.
<p>City of Adelaide Budget Allocation</p>	<p>The 2024/25 Annual Business Plan and Budget did not allocate funding towards progressing the World Heritage Bid. Project management of the bid is being managed within existing resources.</p>
<p>Life of Project, Service, Initiative or (Expectancy of) Asset</p>	<p>Not as a result of this report</p>
<p>Ongoing Costs (eg maintenance cost)</p>	<p>Not as a result of this report</p>
<p>Other Funding Sources</p>	<p>The Mount Lofty Consortium (the Consortium) has noted that there is approximately \$60,000 remaining in a fund set up by the Consortium to contribute towards the ongoing development of the World Heritage bid. Until there is clarity in the World Heritage Governance arrangements, this funding is being retained by the Consortium (Adelaide Hills Council).</p>

Discussion

Current Status

1. On 12 March 2024 Council decided to review partnership arrangements for the World Heritage Bid and Tentative List submission ([Link 1](#)).
2. The City of Adelaide is continuing to liaise with World Heritage expert Duncan Marshall AM to discuss the next steps required to progress a World Heritage Tentative List submission to meet a February 2026 timeframe.
3. In response to the matter of a Preliminary Assessment as raised by Kadaltilla / Adelaide Park Lands Authority at the June 2024 meeting, the City of Adelaide understands:
 - 3.1. The Preliminary Assessment acts as a gateway and further assurance for a bid before significant investment is made in developing the full bid documentation.
 - 3.2. While UNSECO has not mandated the Preliminary Assessment until 2028, the Federal Government is already requiring the Preliminary Assessment for Australian bids.
 - 3.3. The Preliminary Assessment is undertaken once a Tentative List submission has been accepted. It is an opportunity for enhanced dialogue with the World Heritage advisory bodies on the feasibility of a World Heritage Bid.
4. Based on the two-step assurance process, there is some de-risking of the Tentative List submission, as additional detail can be developed through the Preliminary Assessment.

Related Activity

5. In direct response to the Kadaltilla Strategic Plan 2023-2028, the City of Adelaide has engaged consultants to undertake a literature review on the cultural, social, environmental and economic values of the Adelaide Park Lands.
 - 5.1. The literature review will inform the development of a methodology to assess the economic contribution of the Adelaide Park Lands.
 - 5.2. Undertaking the formal assessment will be subject to future budget considerations and is currently unfunded.

Next Steps

6. The next update is proposed to be presented to Kadaltilla at its meeting on 24 October 2024. This will allow Administration to progress the items listed at paragraph 2 and 5.1.
7. Administration is continuing to enact Council decision of 12 March 2024 in relation to partnership arrangements for the World Heritage Bid ([Link 1](#)).

Data and Supporting Information

[Link 1 – Agenda, City Planning, Development and Business Affairs Committee, Tuesday, 5 March 2024](#)

Attachments

Nil

- END OF REPORT -